

Smith

Kitajchuk

# Tatbi No Hama

A Flower for Every Time

Book 1





 @tabinohana

 @tabinohana

 [tabinohana.com](http://tabinohana.com)

Tabi No Hana is Copyright © James Smith & Brandon Lee Kitajchuk 2019.  
Printed in Portland, Oregon by Minuteman Press Gresham. First Printing.

# Tabi No Hana

## A Flower for Every Time

### Book 1

#### Chapter 0

### In All Its Forms

#### Children's Chapter 1

### And Then There Were Two

#### Parents' Chapter 1

### And So It Will Be

Creator / Writer

James Smith

Co-creator / Art / Design

Brandon Lee Kitajchuk

Tabi No Hana logo by

Tim Kameron

Edited by

Kelly Malone



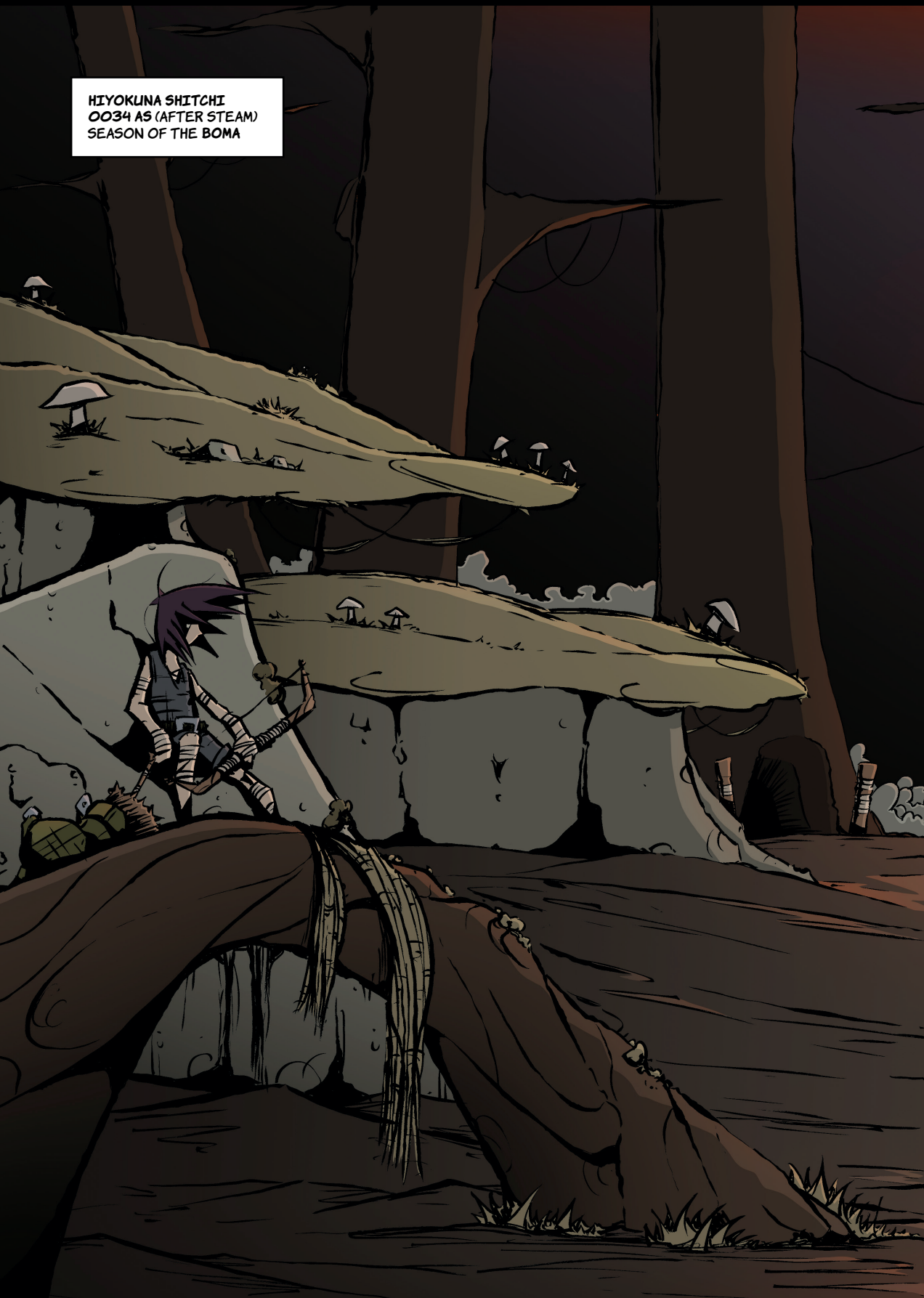


# Tatbi No Hama



Chapter 0  
**In All Its Forms**

HIYOKUNA SHITCHI  
0034 AS (AFTER STEAM)  
SEASON OF THE BOMA





WILD BINMAHDU





UTSUKUSHA NUMA, 15 YEARS OLD



COME ON.  
STAY STILL.



K  
R  
A  
S  
H

HUH!?



!



**NONONO**  
COME ON!

**!?!**









OKU NUMA, 9 YEARS OLD --

-- AND HIS BEAR. BUTTON

SORRY.



YOU KNOW,

THOSE THINGS ARE  
WORTH A TON WHEN  
CAPTURED.

SIGH

WHATEVER. LET'S  
GO HOME.



DAD SAYS I SHOULD  
GET OUT MORE AND  
LEARN TO HUNT.

YOU COULD HAVE  
ASKED, YOU KNOW.



HIYOKUNA'S FARMING DISTRICT





NUMA FAMILY FARM



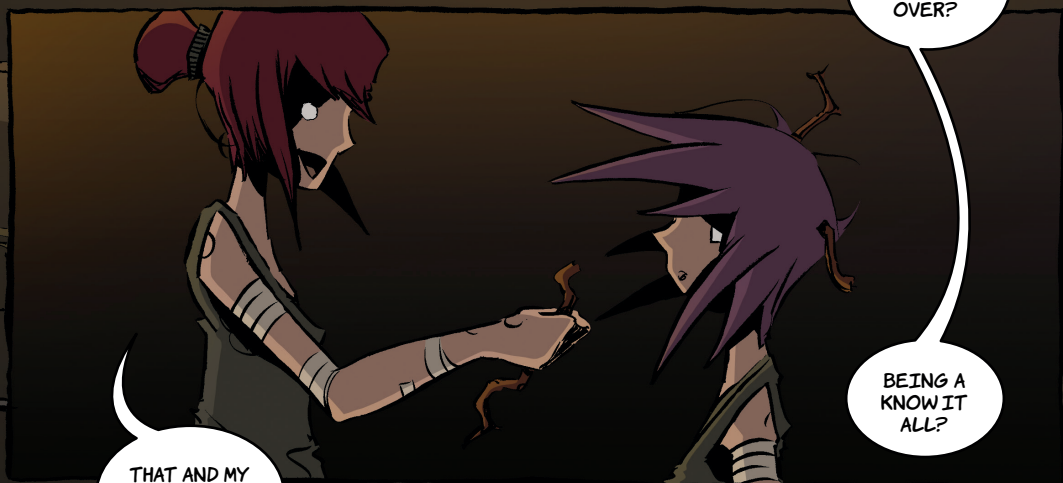
TODAI A NUMA







THAT HOW YOU WON DAD OVER?



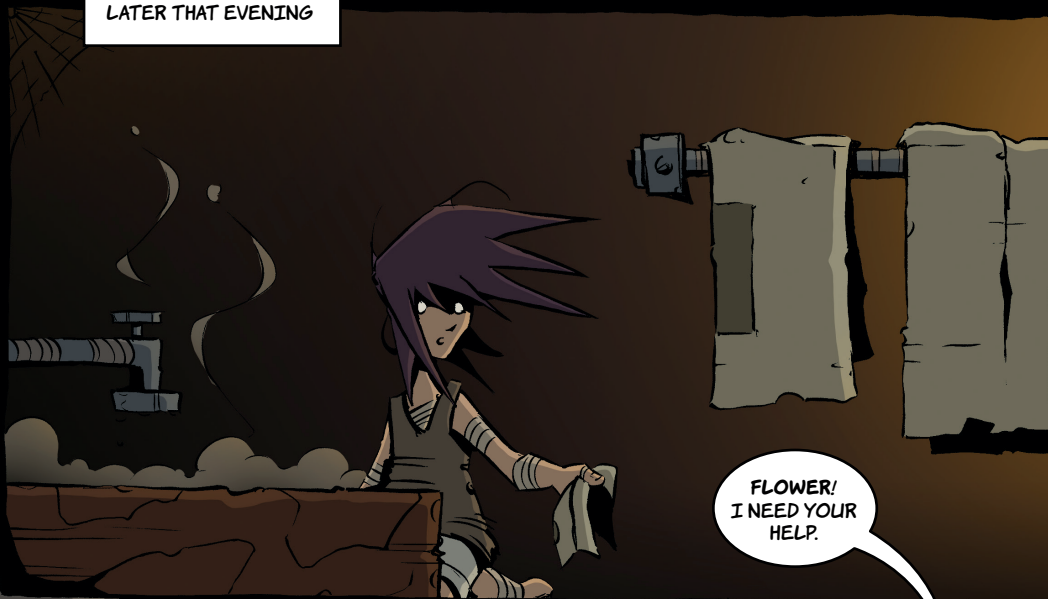
BEING A KNOW IT ALL?

THAT AND MY CHARMING GOOD LOOKS.



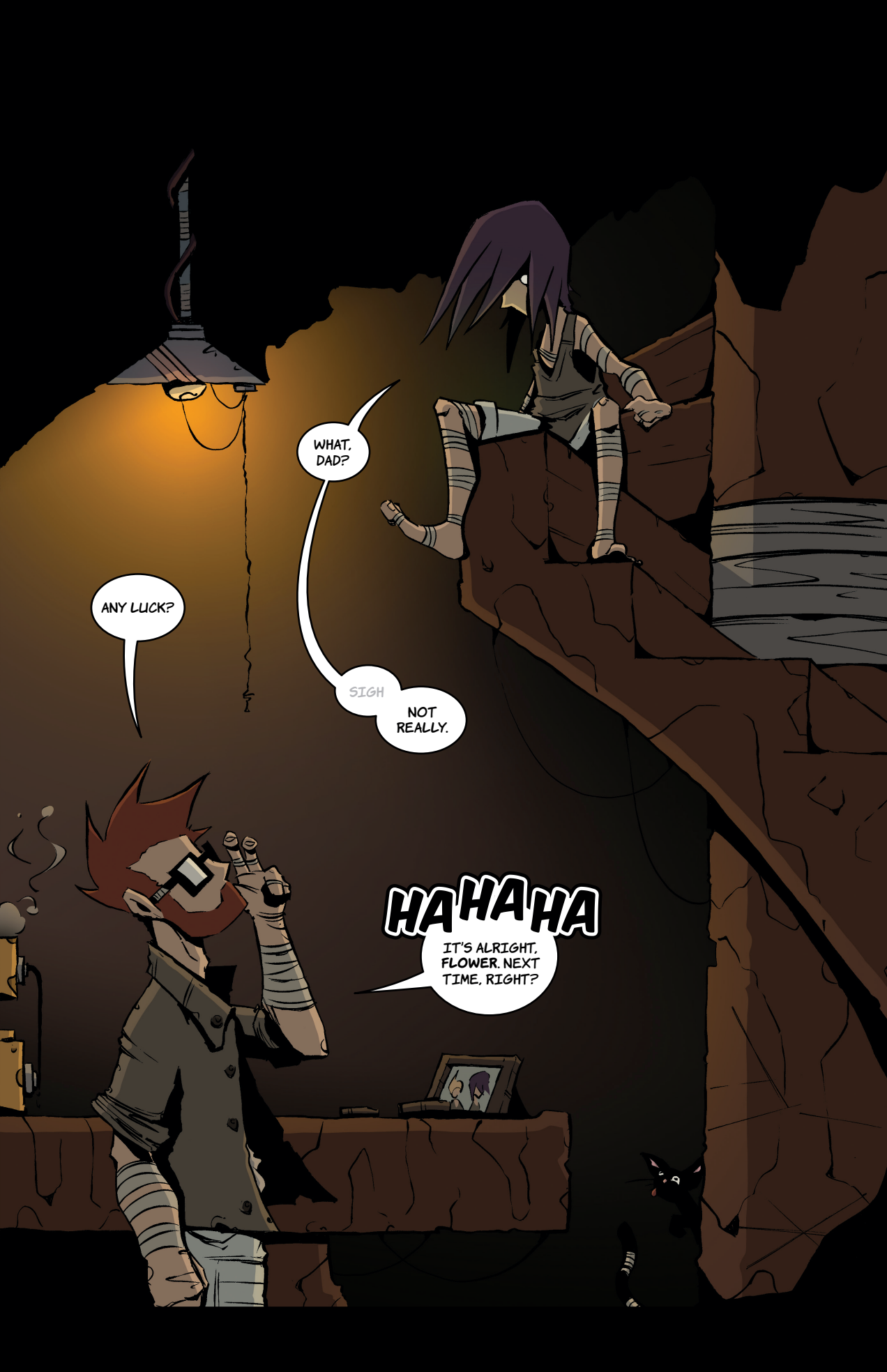
JUST REMEMBER, THE TWO OF US MAKE UP THE WHOLE YOU.

LATER THAT EVENING



KAIASHI NUMA'S WORKSHOP

BELOW THE TREE



ANY LUCK?


WHAT,  
DAD?

SIGH  
NOT  
REALLY.

**HAHAHA**

IT'S ALRIGHT,  
FLOWER. NEXT  
TIME, RIGHT?





WHY CAN'T  
YOU TAKE OKU  
HUNTING?



HOW MANY  
PETALS ARE LEFT,  
UTSU?



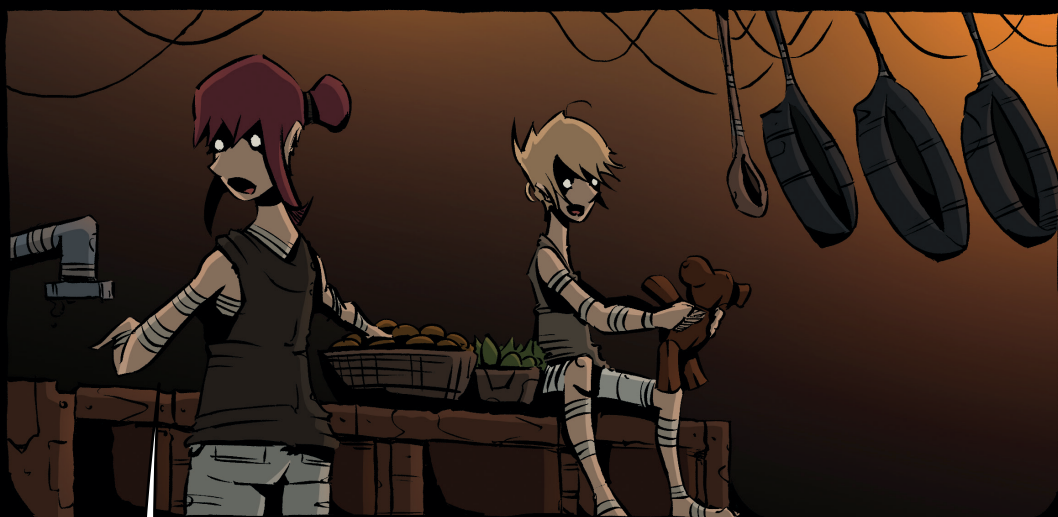
SIGH

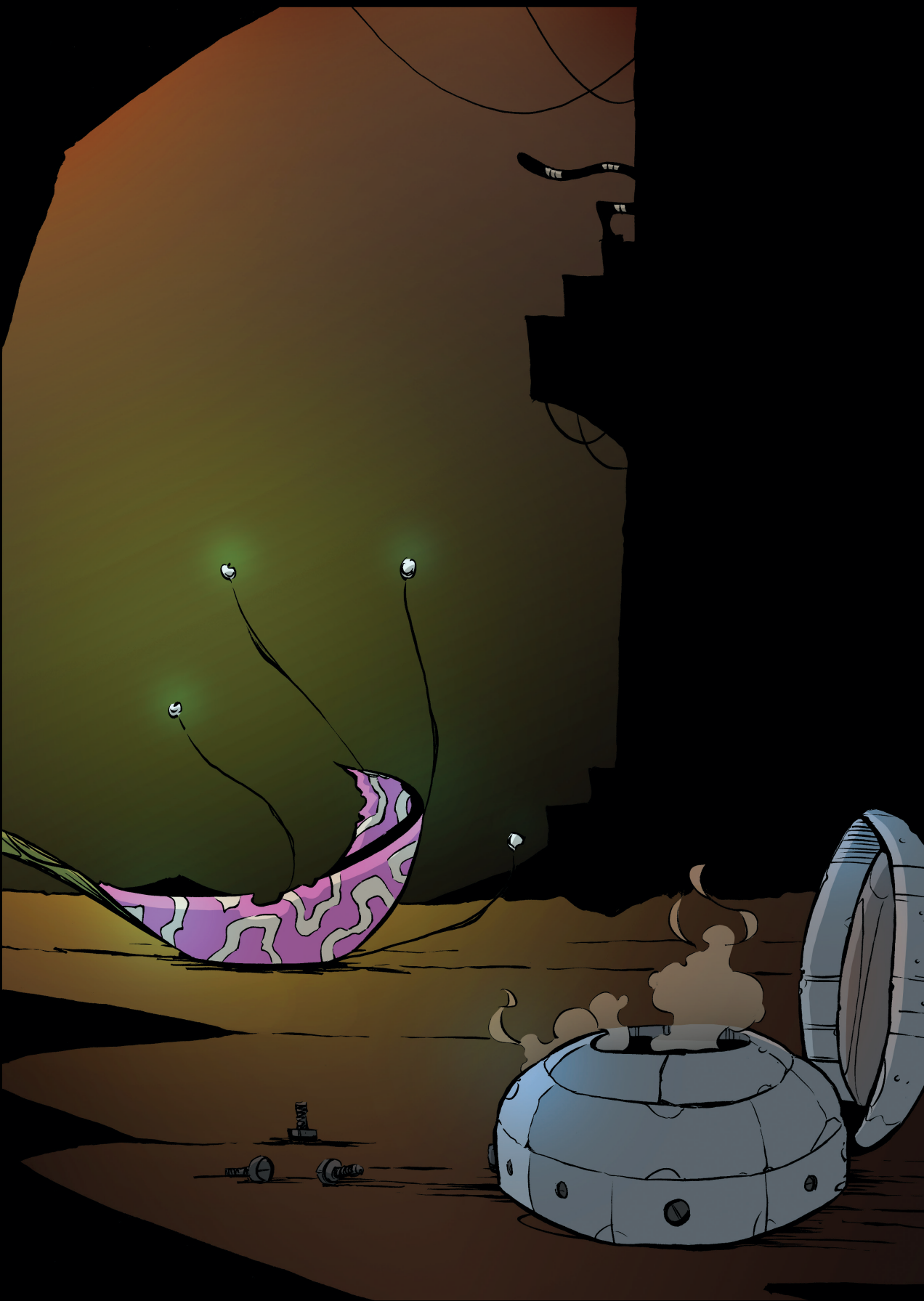
ONLY ONE MORE...

YOU ONCE WERE  
BEAUTIFUL.



YOU STILL ARE,  
MY LOVE.

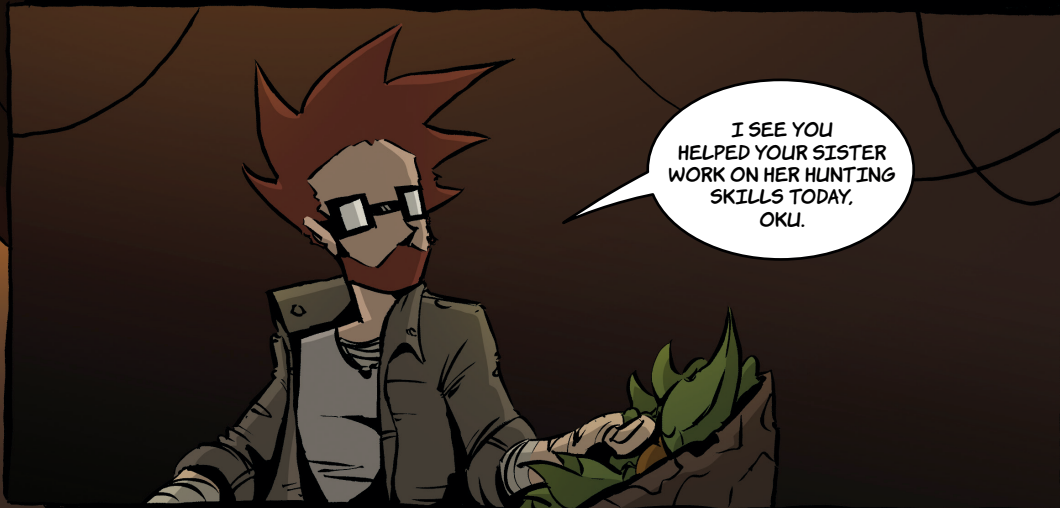









NICE WORK, MY  
LITTLE CHEF.





HAD TO HAVE  
BEEN THOSE  
BIG MUSCLES  
OKU HAS.

THOSE THINGS  
WOULD SCARE  
AWAY ANY BIG  
OLD LIZARD!



BETWEEN YOU AND  
BUTTON, I'M SHAKING  
IN MY BOOTS THINKING  
ABOUT IT!





OKU, HONEY, PLEASE  
COME HELP ME WITH  
THE DISHES.

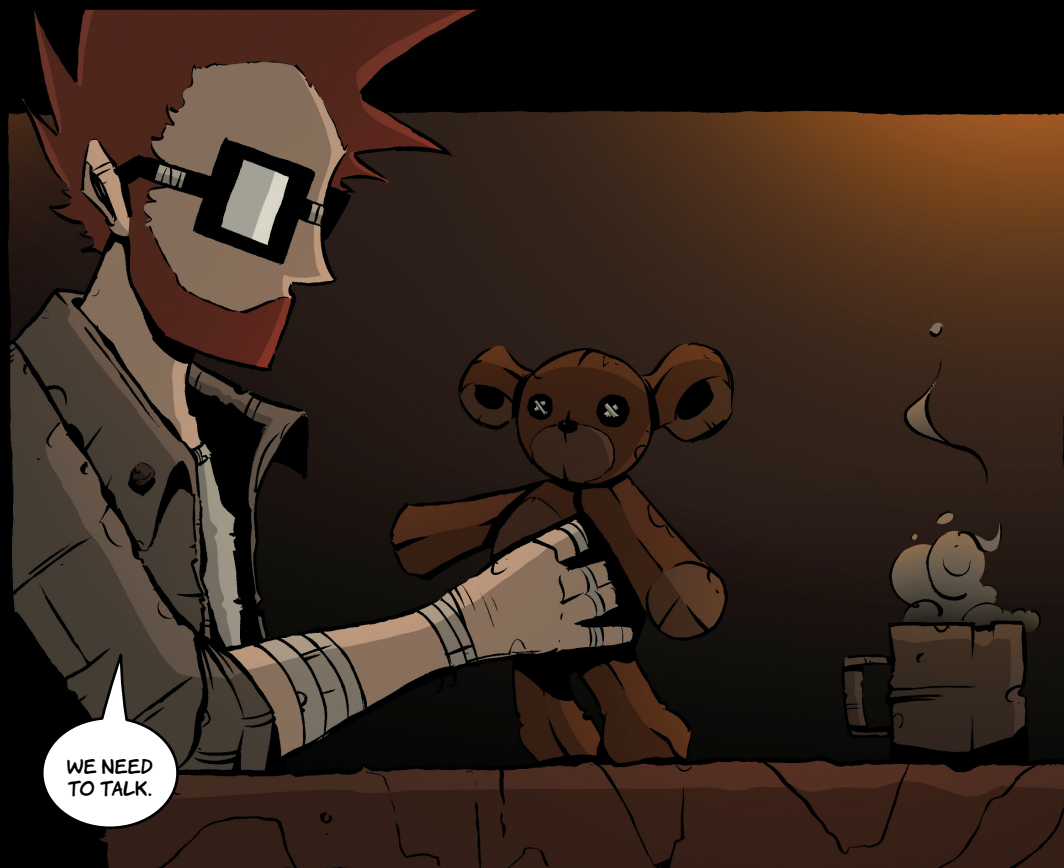


CAN I WASH  
THIS TIME? I HATE  
DRYING PLATES.



WHAT ARE YOU  
LOOKING AT!?





UTSU, I KNOW YOU'RE TRYING TO FETCH GOODS TO BUY ANOTHER FLOWER. I MEAN, AFTERALL, THEY ARE FAR FROM CHEAP.

FAR FROM CHEAP!?

DAD, NINE OUT OF TEN TRADERS LAUGHED WHEN I ASKED.

IT TOOK ME A YEAR TO FIND THE LAST KIREI FLOWER.

YEAH, DON'T REMIND ME.

I'M TRYING TO GATHER TOTA CRYSTALS, BUT THE CAVES ARE ALWAYS GUARDED BY THE OODAN.





I KNOW YOU'RE TRYING. THAT'S WHY I WANTED TO TALK.

TAKE IT.

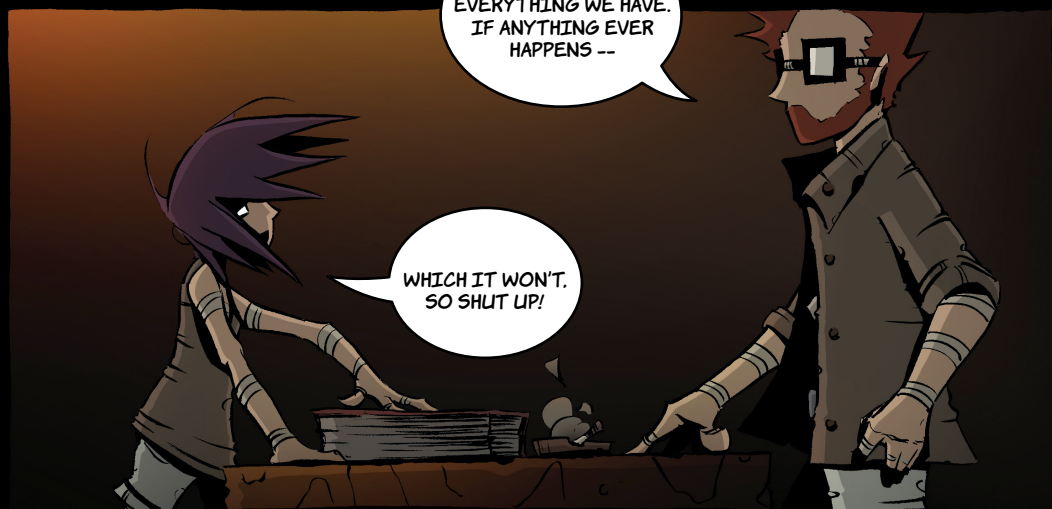
I CAN'T. IT'S THE ONLY ONE!



ACTUALLY, IT ISN'T. AND YOU MUST.

DOWNSTAIRS, IN OUR SPECIAL DRAWER, IS A BOX WITH FIVE TEM.

IT'S ALMOST EVERYTHING WE HAVE. IF ANYTHING EVER HAPPENS --



WHICH IT WON'T. SO SHUT UP!



COME ON, YOU  
TWO. IT'S BEDTIME  
ALREADY.



DON'T FORGET,  
AND DON'T LET  
ANYONE SEE THAT  
LOCKET. EVER!





LATE THAT NIGHT

CAN YOU  
TEACH ME TO  
FIRE A BOW?

SLEEP, OKU.







"WHAT DO YOU  
MEAN YOU THINK  
SOMEONE  
SAW IT?"

"I DON'T KNOW!  
I COULD HAVE  
SWORN..."



"WHAT!?"



"LOOK,  
I JUST COULD HAVE  
SWORN I SAW A GUY'S  
FACE PEERING IN  
MY WINDOW."

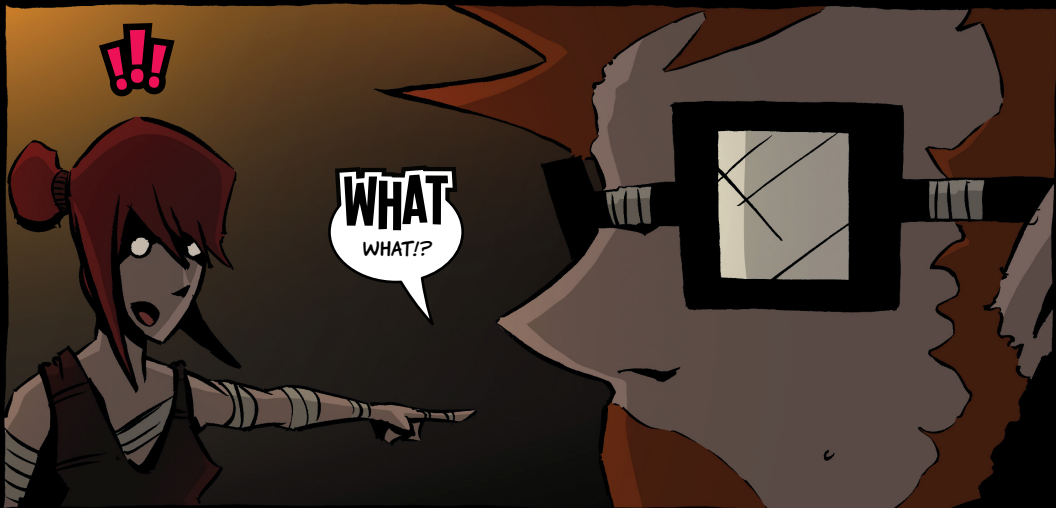
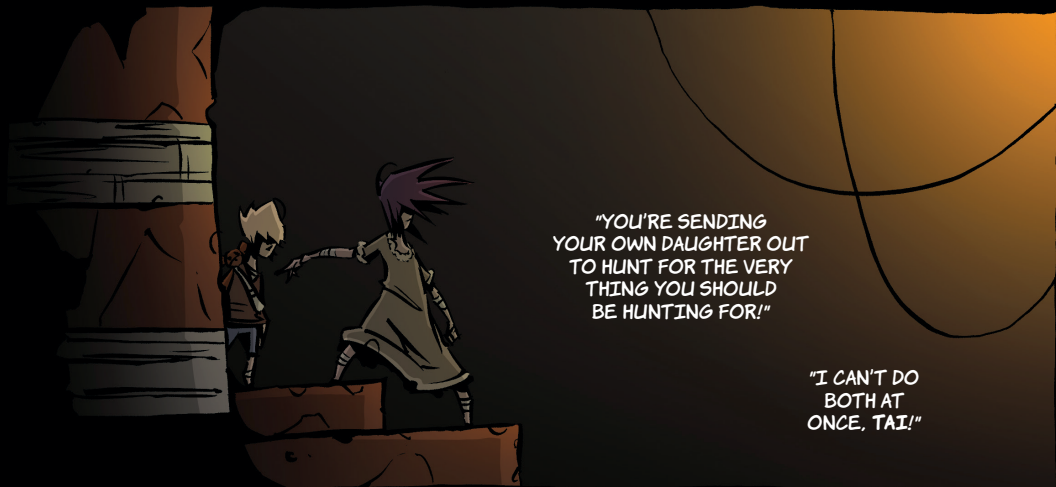
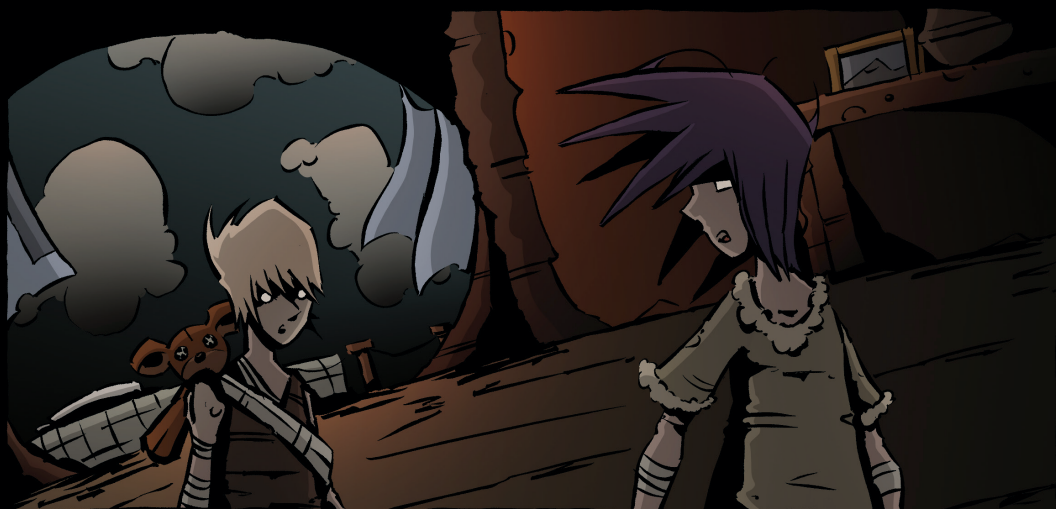


IS EVERYTHING  
OKAY?

JUST ANOTHER  
FIGHT.

WHY WOULD  
ANYONE SPY ON  
US? WE DON'T  
HAVE MUCH.









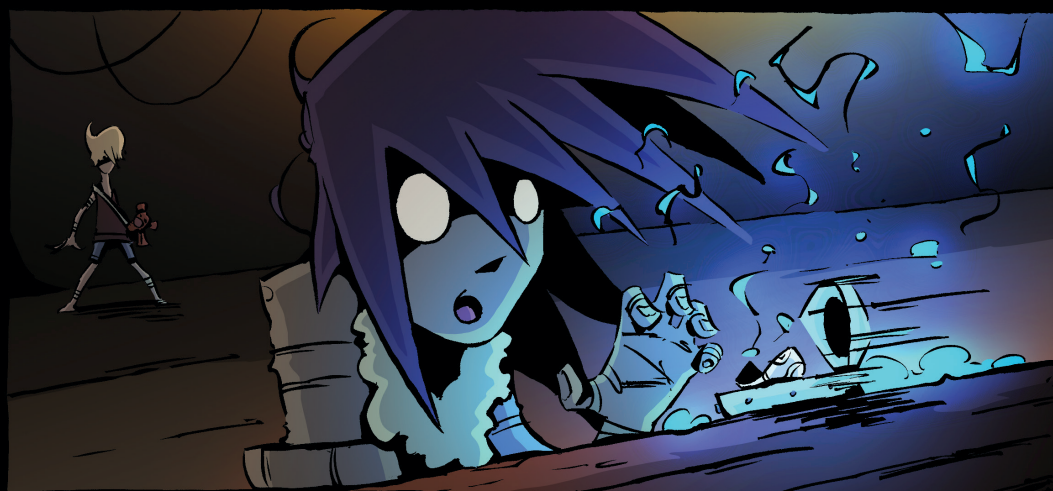




**UTSU!!OKU!!!**



**DAD! NO!  
DAAAAAD!!!**





DAD... NO...

# Tatbi No Hama

Children's Chapter 1

**And Then There Were Two**











ARE THEY  
COMING  
BACK?



NO, OKU.  
THEY'RE  
NOT.





WE NEED TO GO.  
OKU. WE AREN'T  
SAFE HERE.



WHY? WHAT IF  
THEY COME BACK,  
UTSU!



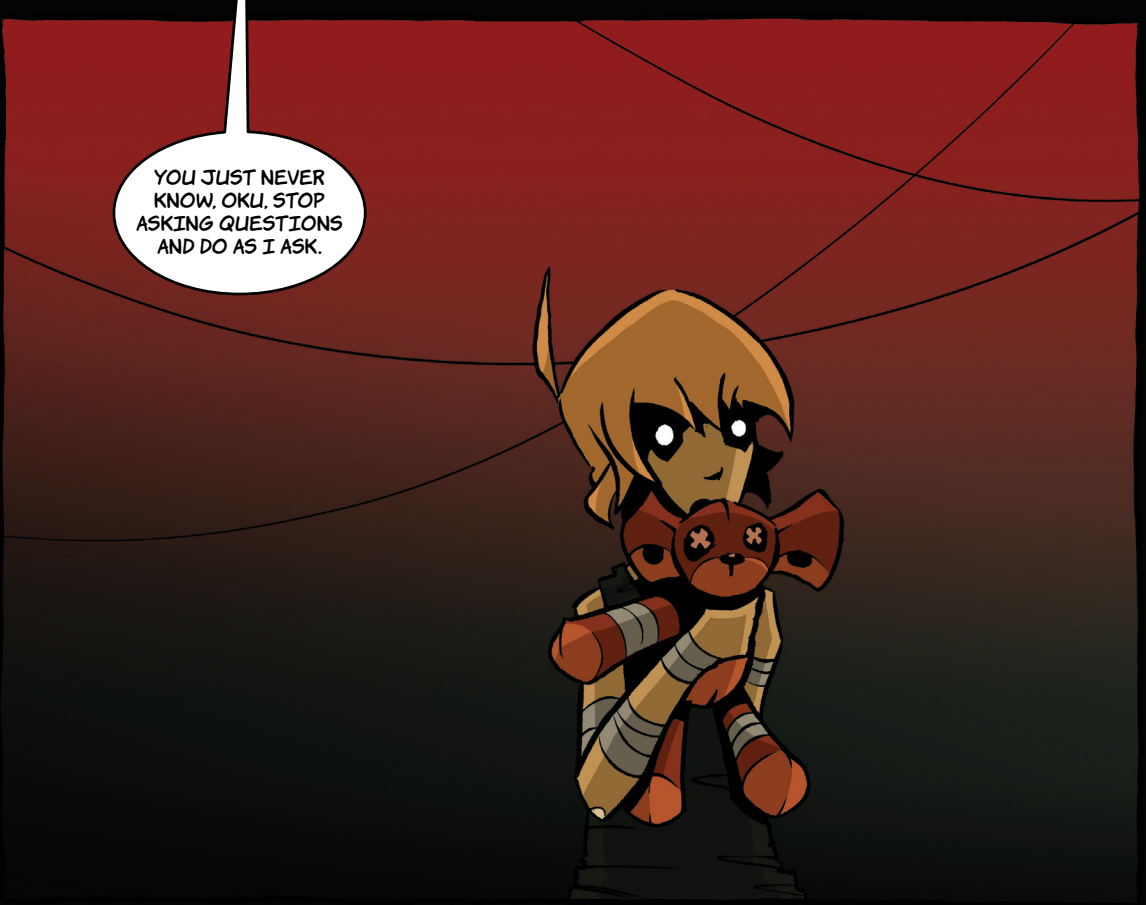
I'LL LEAVE THEM  
A NOTE, OKAY?

OKAY...



YOU NEED CLOTHES.  
SOMETHING WARM AS  
WELL AS YOUR DERMA.

WHY? WE AREN'T  
WALKING IN WATER.  
ARE WE?



YOU JUST NEVER  
KNOW. OKU, STOP  
ASKING QUESTIONS  
AND DO AS I ASK.



I MISS MOM  
AND DAD, UTSU!  
WHY DID THIS  
HAPPEN?

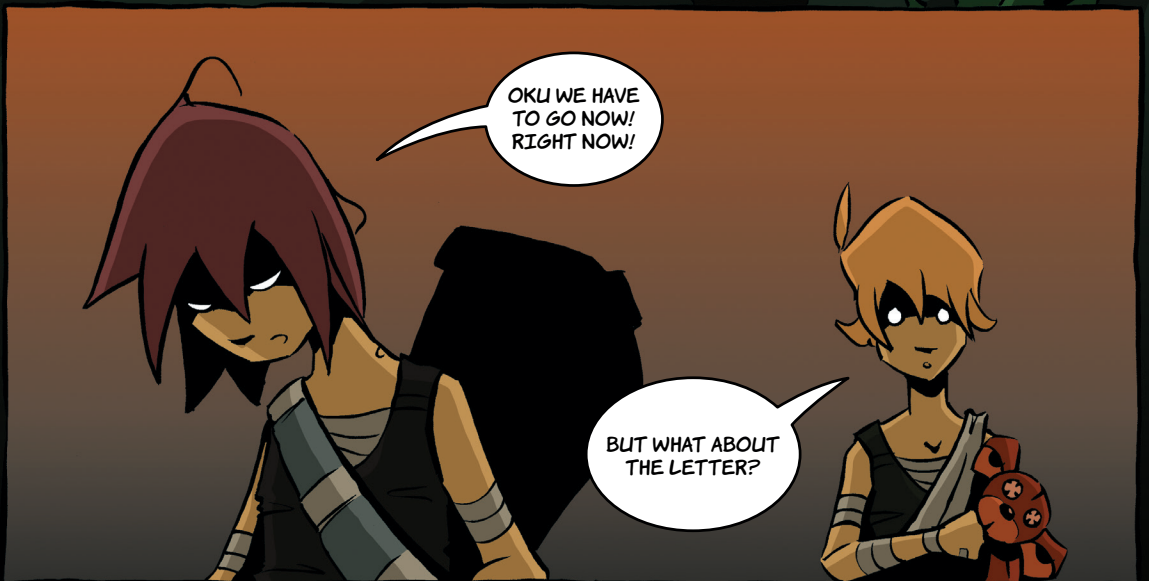


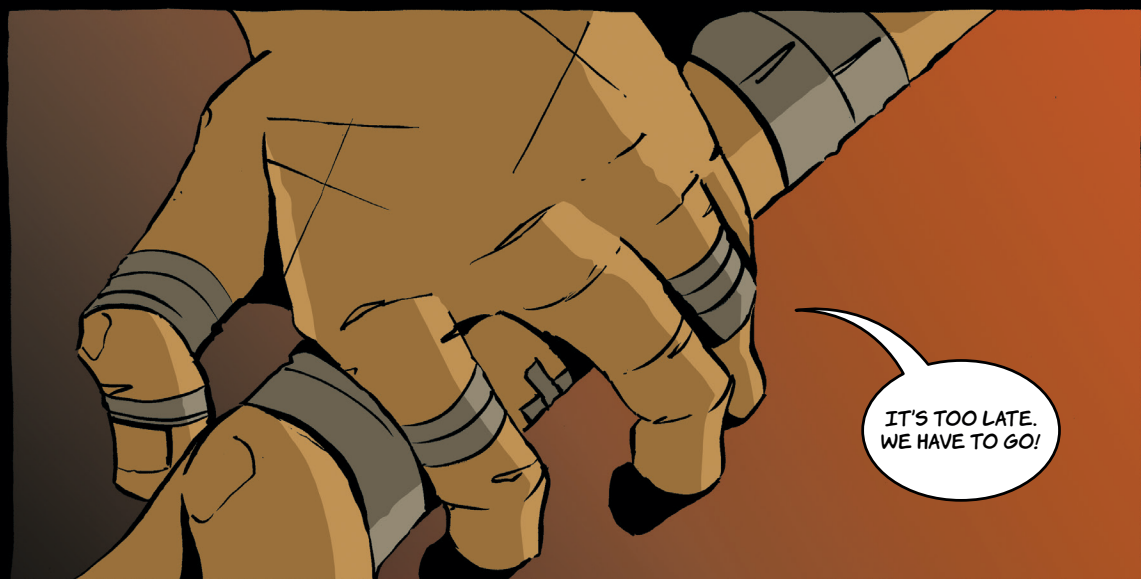
I KNOW, LITTLE  
O. WE'LL FIND THEM.  
OKAY? I'M HERE.  
ALL RIGHT?















"BUTTON!"



"NO!"





WE CAN'T  
GO BACK

WE HAVE--






SHOULD I CHASE  
AFTER THEM?

NO.  
ALL IN  
TIME.



GHODA TRAINING DOCKS





UTSU! I CAN'T  
RUN ANYMORE...

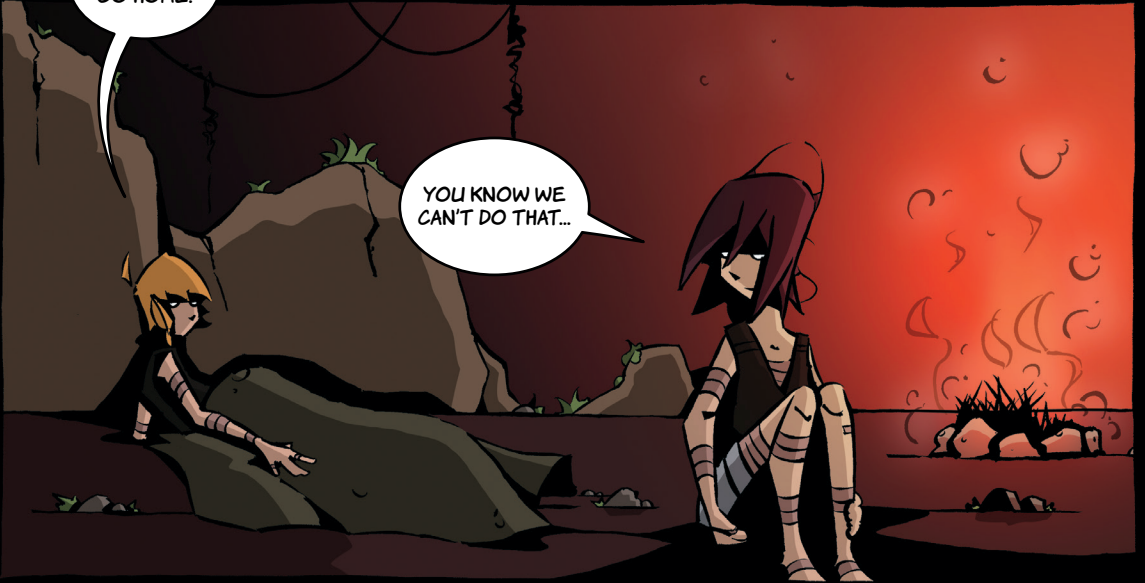
YOU HAVE TO!





I WANNA  
GO HOME.

YOU KNOW WE  
CAN'T DO THAT...



TRY AND  
SLEEP, OKAY?



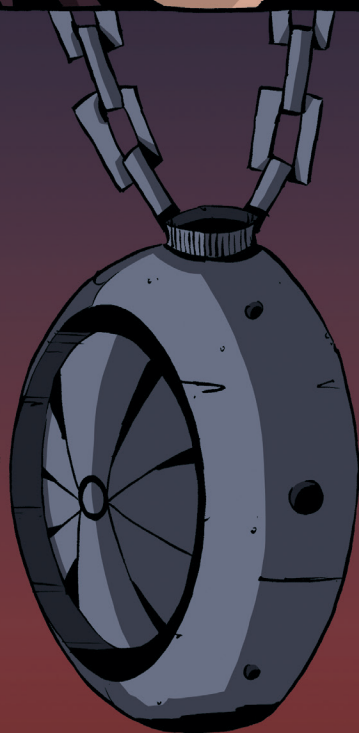




"IF YOU'RE READING  
THIS, THEN MY WORST  
FEARS HAVE ARRIVED."

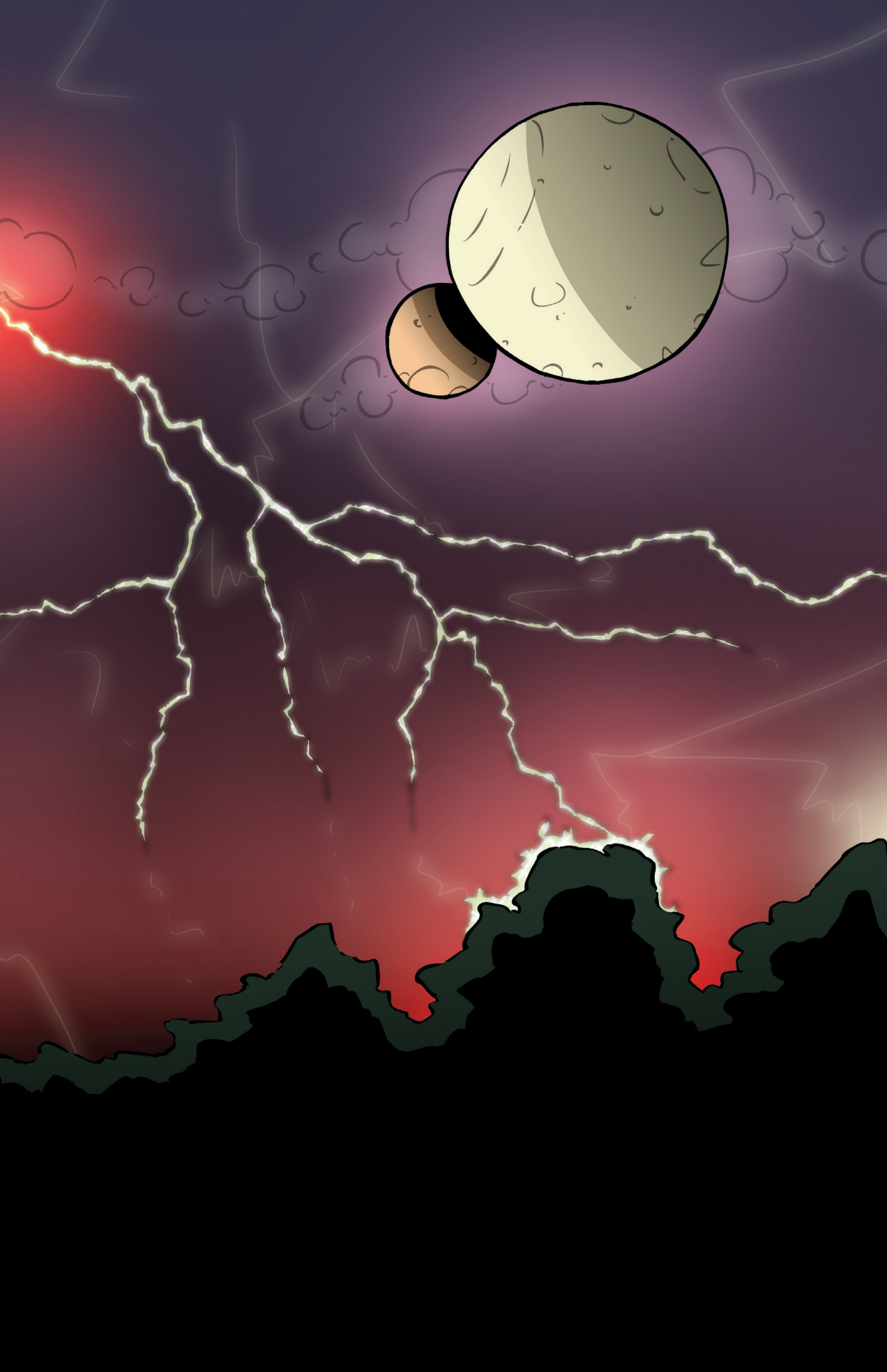


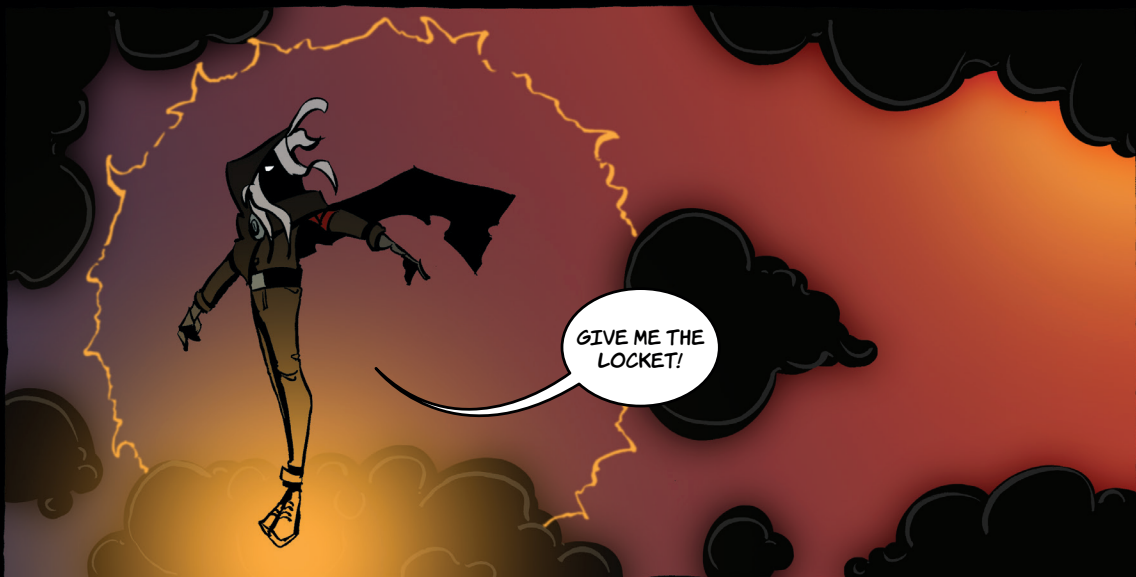
"BEWARE THE MAN NAMED  
SOOMA. HE'S A MAN OF  
MUCH POWER."



"AND ONE MORE THING,  
MY FLOWER. WE LOVE  
YOU BOTH."







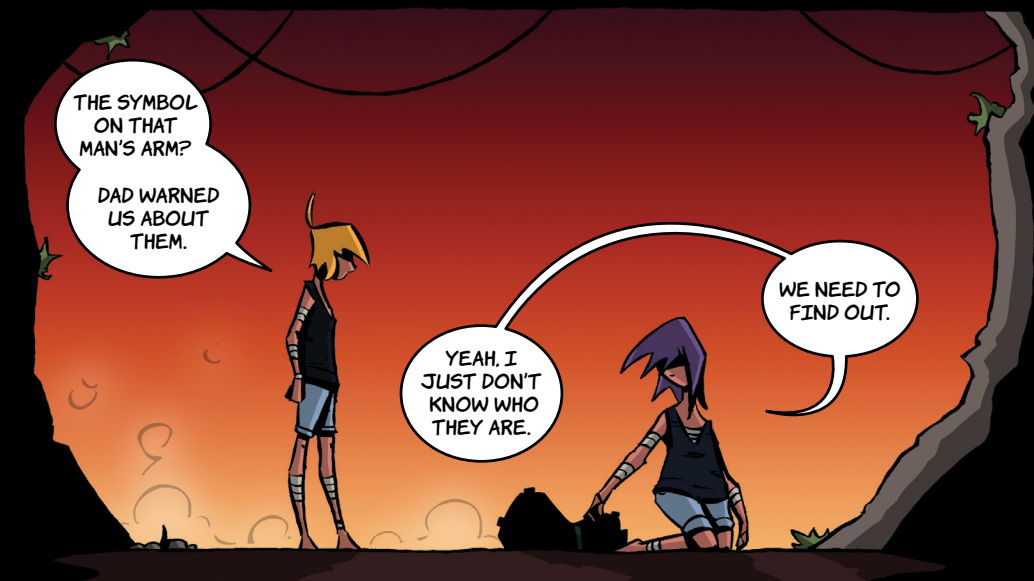
GIVE ME THE  
LOCKET!



**NO!**

SIS, YOU  
WERE HAVING  
A BAD DREAM.

I DREAMED  
ABOUT  
BUTTON.



THE SYMBOL  
ON THAT  
MAN'S ARM?

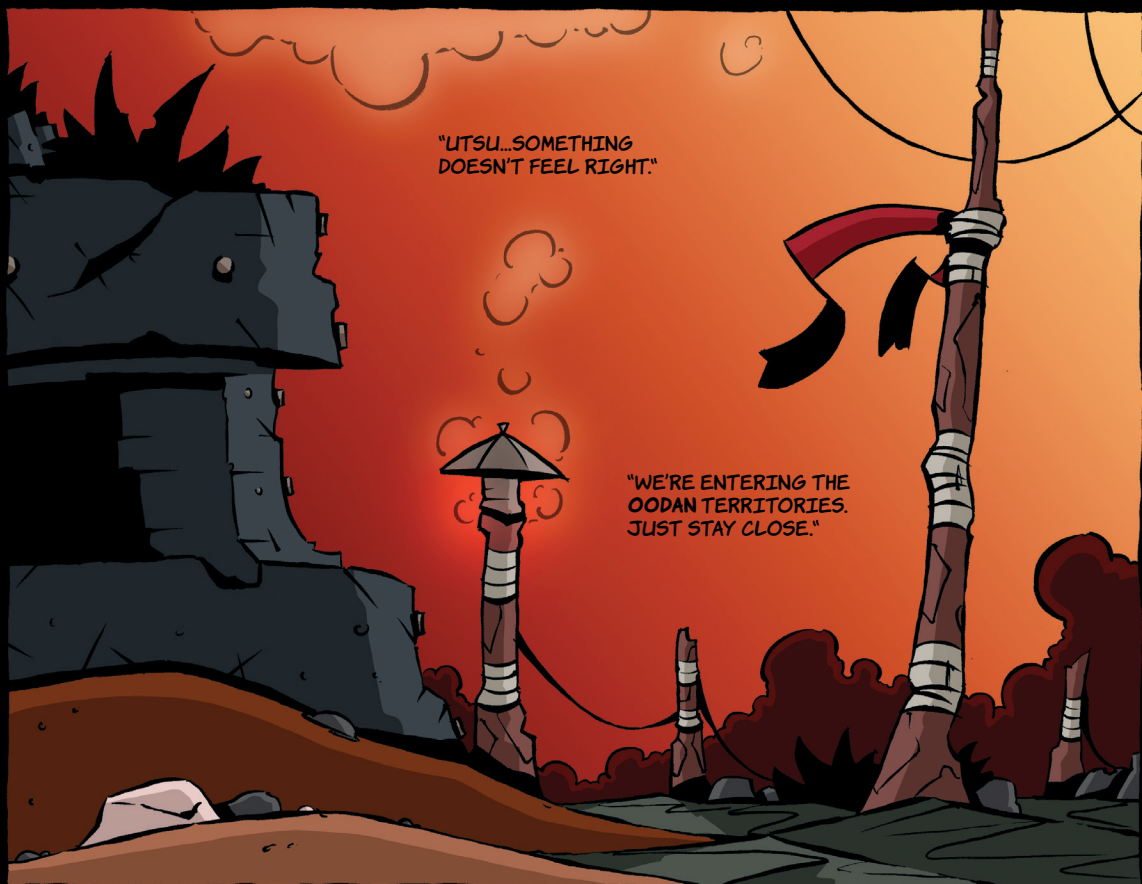
DAD WARNED  
US ABOUT  
THEM.

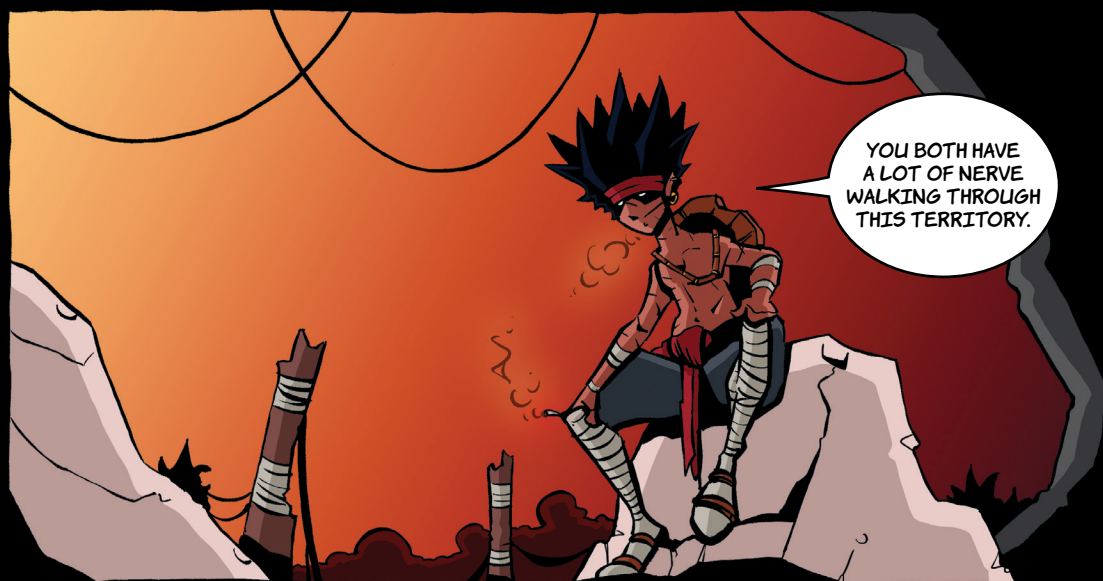
YEAH, I  
JUST DON'T  
KNOW WHO  
THEY ARE.

WE NEED TO  
FIND OUT.









YOU BOTH HAVE  
A LOT OF NERVE  
WALKING THROUGH  
THIS TERRITORY.



ESPECIALLY  
BEING SO...  
YOUNG.



OKU, IF I  
TELL YOU  
TO.

YOU RUN  
AND DON'T  
LOOK BACK.  
OKAY?





I'M LOOKING  
FOR OLMA.



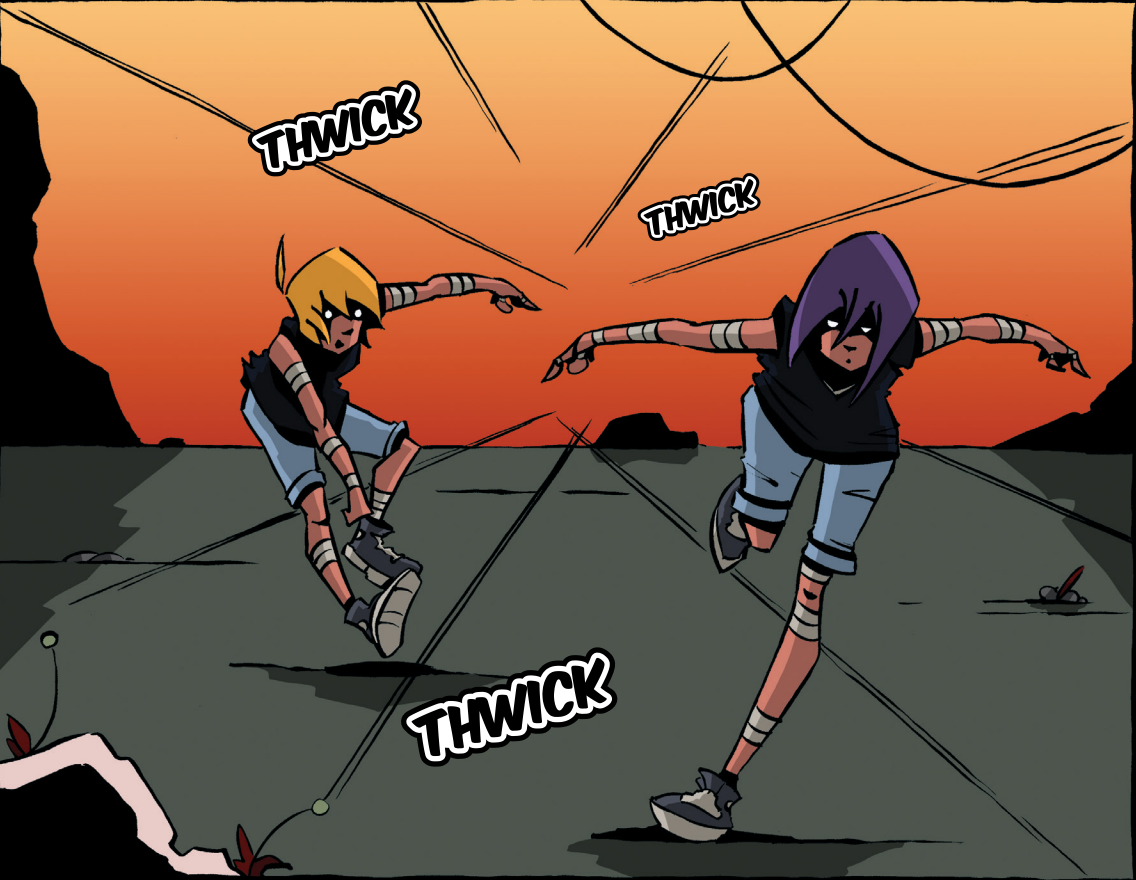
ARE YOU NOW?  
SHE'S QUITE THE  
POPULAR MERCHANT  
IN THIS REGION.

BUT I KNOW  
WHERE SHE IS.  
COME, I CAN  
TAKE YOU.

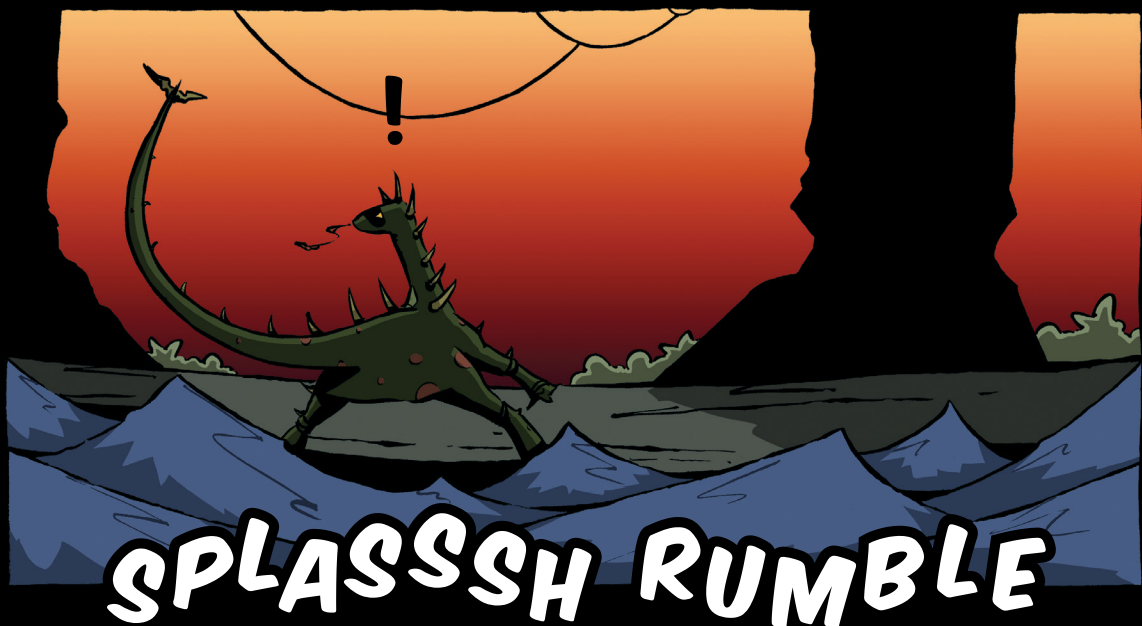


"RUN,  
OKU!"

















TO BE CONTINUED...

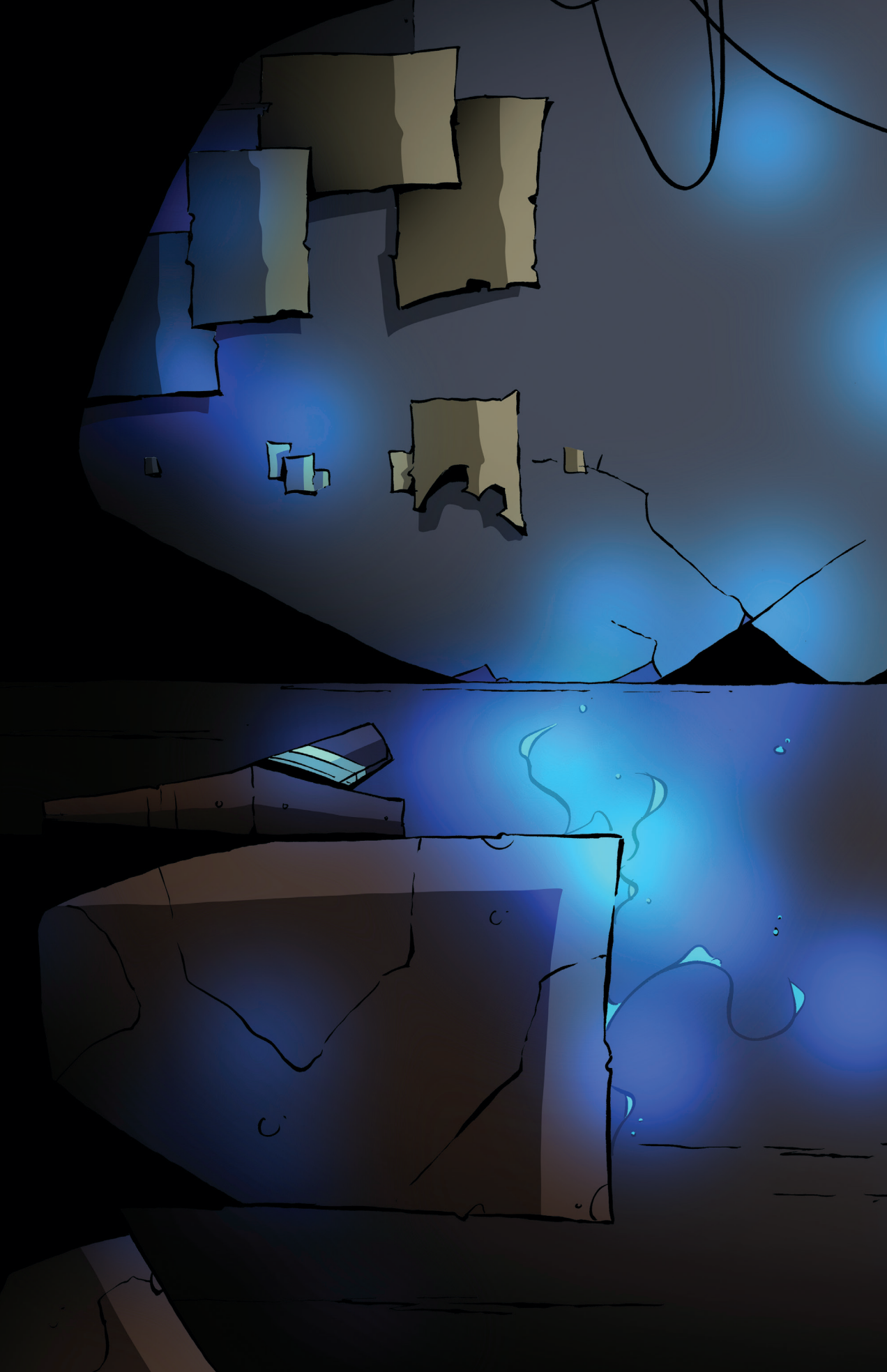
# Tatbi No Hama

*Parents' Chapter 1*  
**And So It Will Be**



***UTSU!***

***OKU!!***







**GROAN**

**GASP**









WHAT ARE WE GOING  
TO DO ABOUT OUR CHILDREN!  
KAIASHI, ARE YOU EVEN--

--I RECOGNIZE  
THIS PLACE!







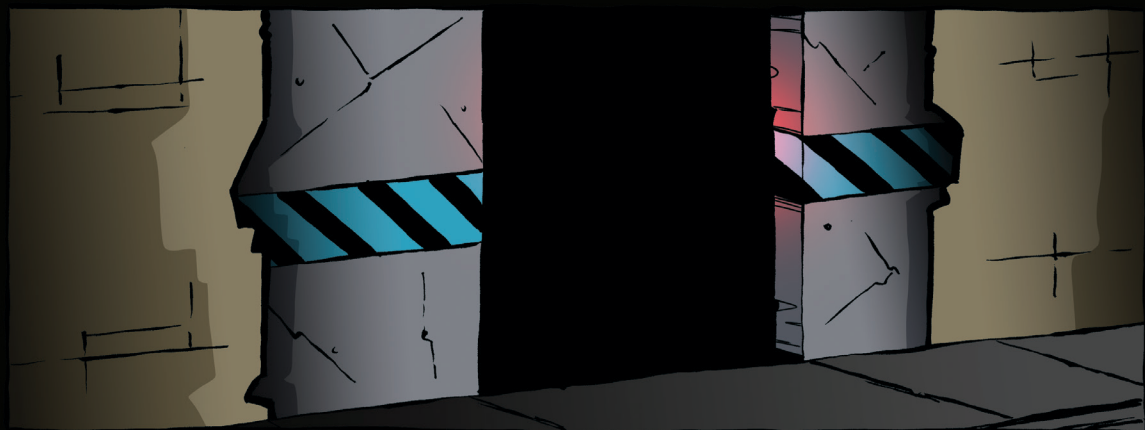
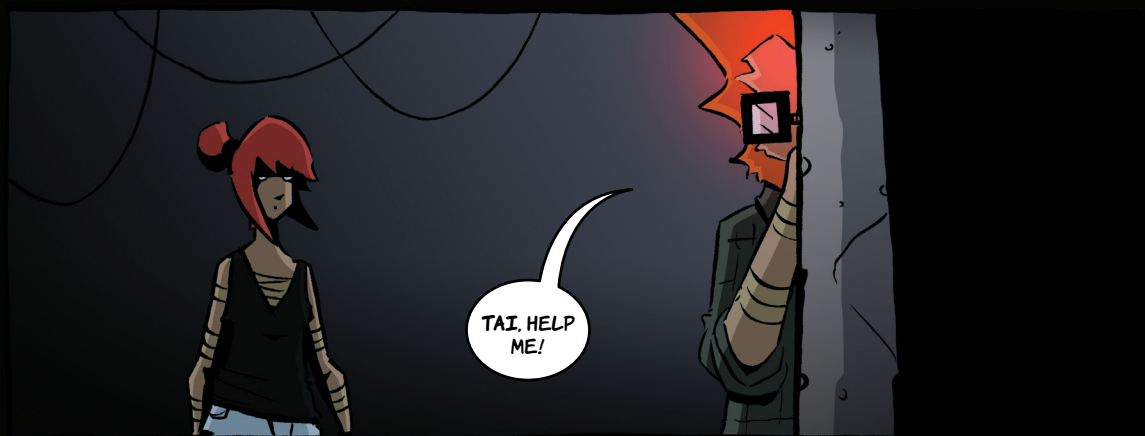


NO NO NO.  
THIS ISN'T WHAT  
I THINK IT IS.

**NO!**

WHAT??









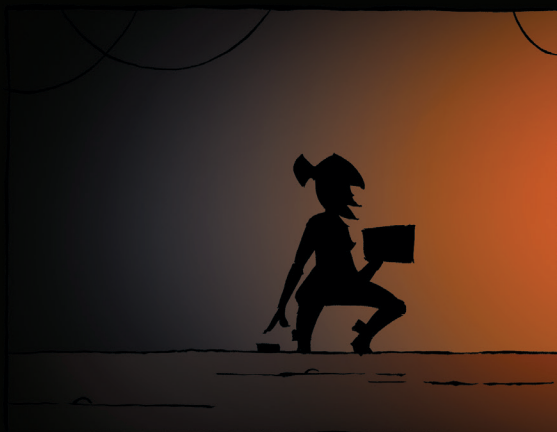
OH. MY. GOD!





I SAY,  
SAMMY BOY.  
THIS MAP MAKES  
NO SENSE  
AT ALL.

FOR NOT. 'OL.  
MY SENSE OF  
DIRECTION IS  
IMPECCABLE!





WHY IS  
OKU'S FACE CUT  
OUT, KAI?



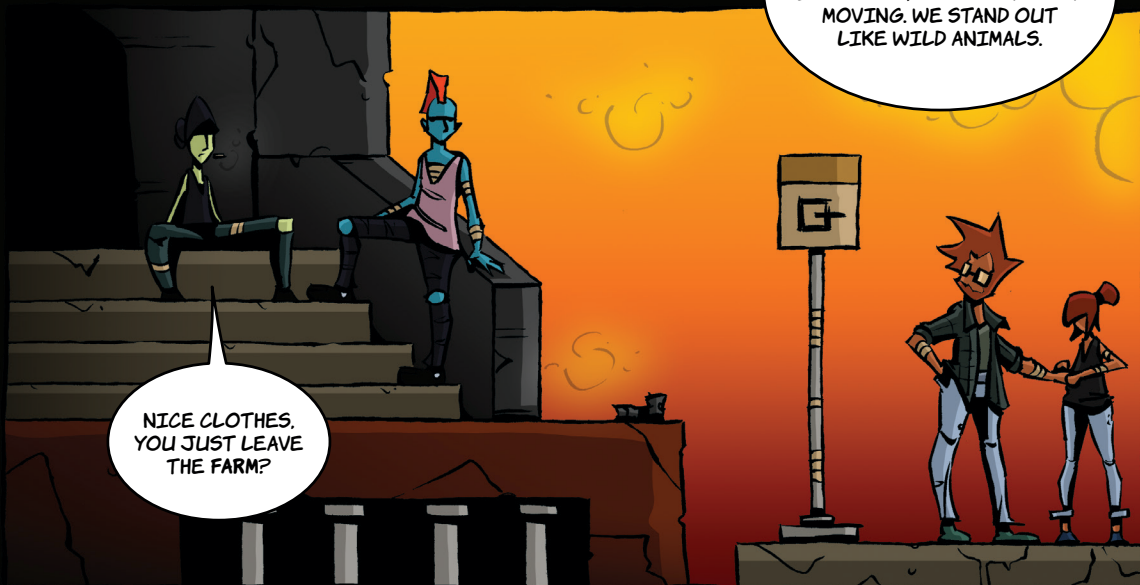
THIS WAS ONCE  
OUR HOME? I--







I DON'T KNOW, TODAIA, BUT THERE'S ONE THING I DO KNOW. WE NEED TO GET MOVING. WE STAND OUT LIKE WILD ANIMALS.



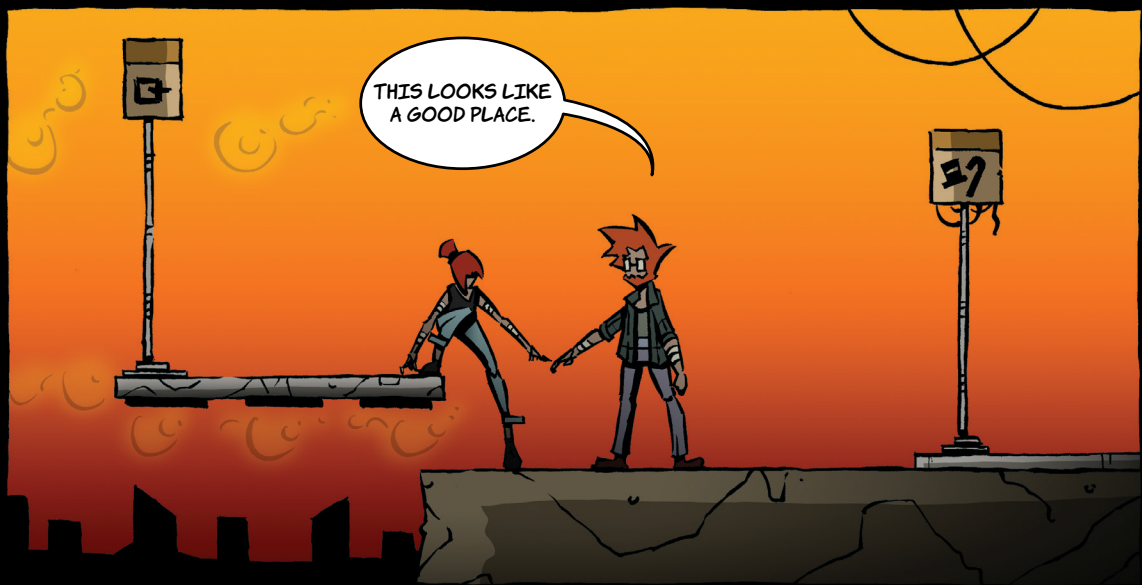
NICE CLOTHES. YOU JUST LEAVE THE FARM?



FIRST THING'S FIRST. WE NEED TO GET OUT OF THESE CLOTHES.

SECOND, WE NEED TO FIND A KIREI FLOWER. QUICK.

IF THEY EVEN STILL EXIST.

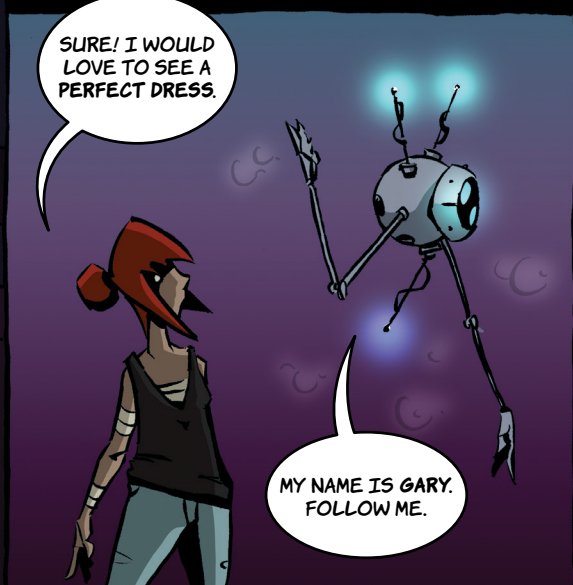
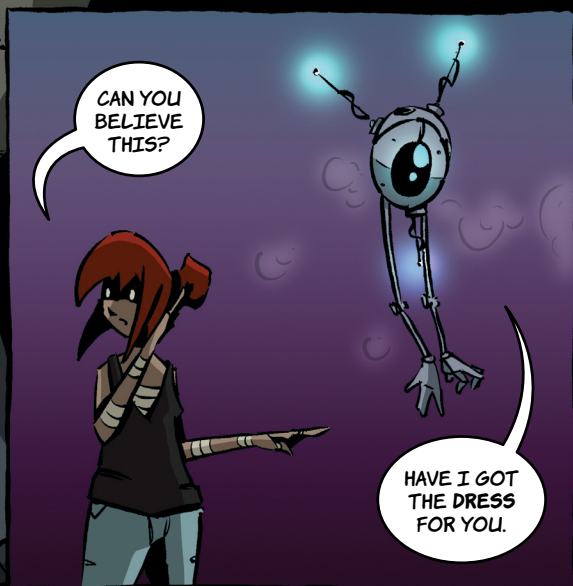


THIS LOOKS LIKE  
A GOOD PLACE.

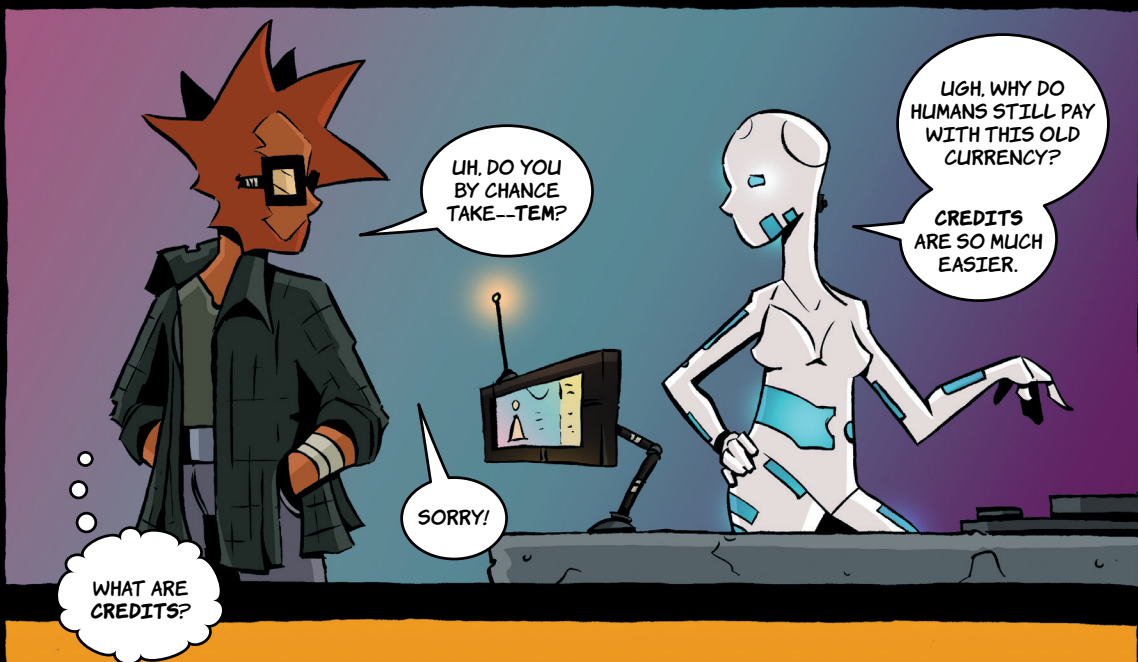
UHH, CAN I  
HELP YOU?

HUMMMMMM

WE'RE, UH,  
JUST LOOKING!











A FLOWER  
SHOP?



IT'S MASSIVE. TODAIA!  
I MEAN LOOK AT THAT  
THING. BIGGER THAN  
ANY TREE I'VE EVER  
SEEN IN MY LIFE!

OR MOUNTAIN  
EVEN. WHERE'S  
THE WATER?



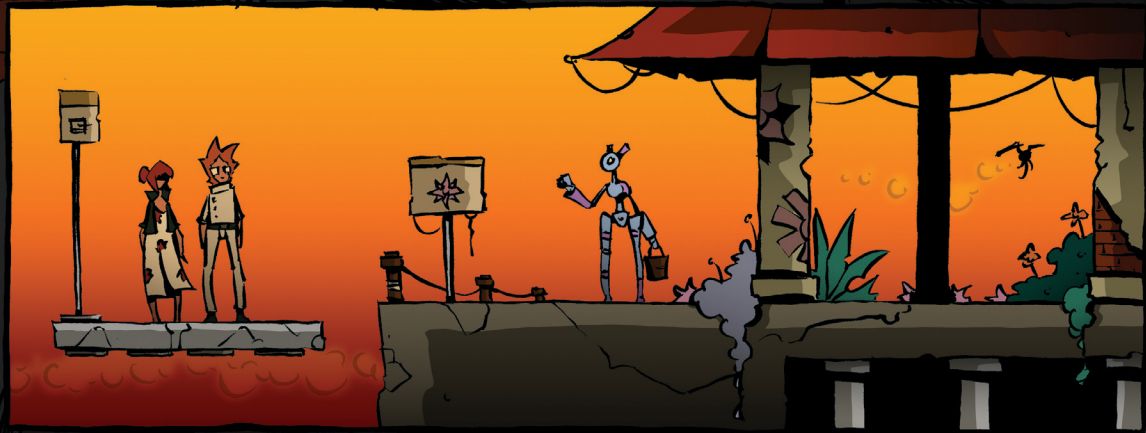


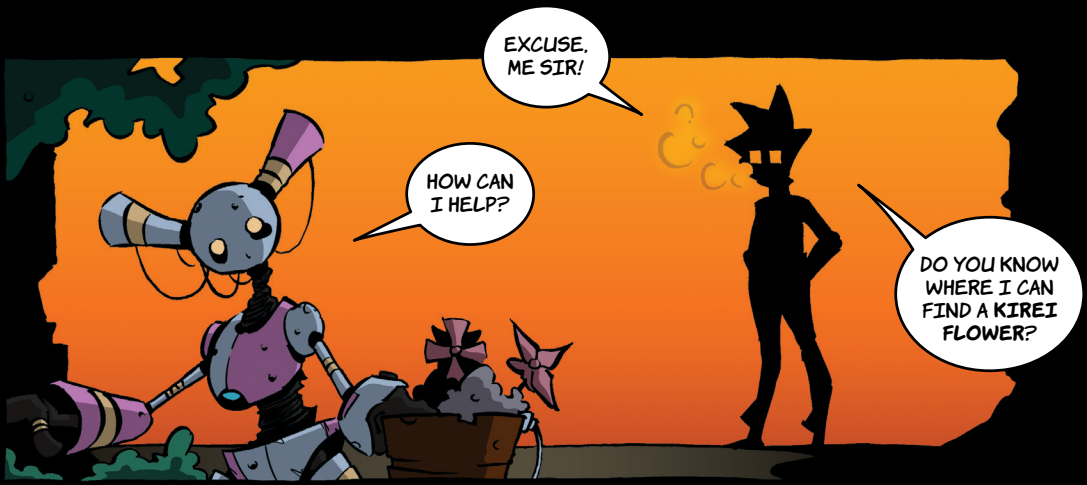
**HRRM  
-- BZZZT!**

RIIIIGHT...

OH  
BROTHER.

YOU SEE,  
SOPHIE, MY DEAR,  
I LIKE TO THINK OF  
MYSELF AS SOMETHIN'  
OF A RENAISSANCE  
MAN... WITH... HUMBLE  
BEGINNINGS.





**BEEP -- ZOOM**

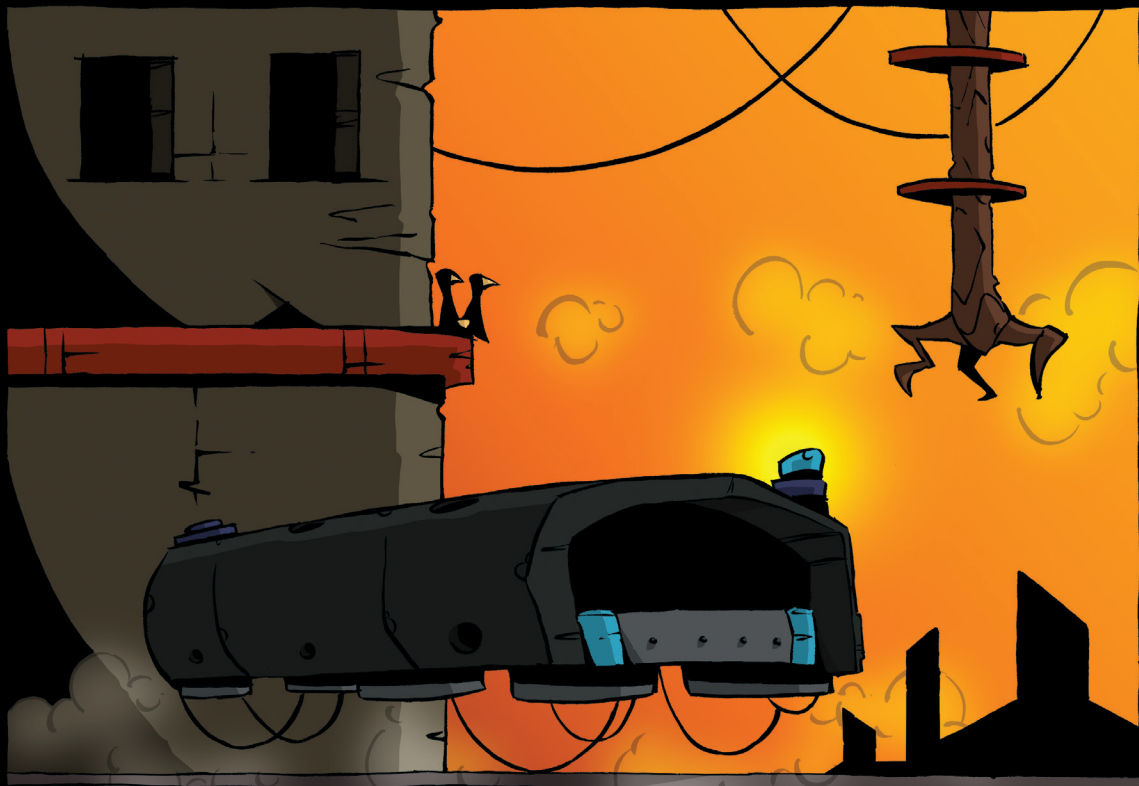




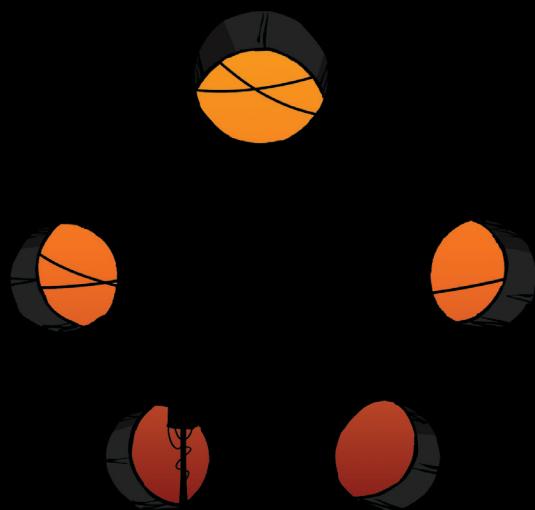
THE SECOND  
YOU MENTIONED  
THAT FLOWER  
THAT THING ON  
THE WALL LOOKED  
RIGHT AT YOU!

HUH?  
YOU'RE BEING  
PARANOID.

NO, I'M VERY  
SERIOUS.  
SOMETHING  
ISN'T  
RIGHT!



**RRRUMBLE PHSSSSH**





THOSE TWO.  
GET THEM.

TODATA!  
RUN!



**RUN!**









WE CAN'T  
OUTRUN  
THEM,  
TAI!

I SEE A DOOR,  
JUST KEEP  
RUNNING!



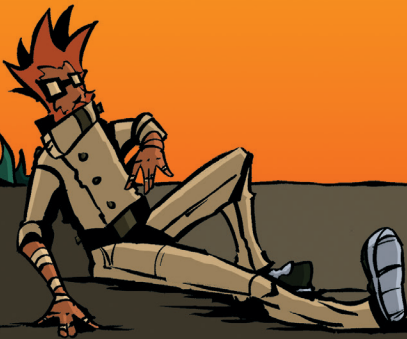
KA-CHUK

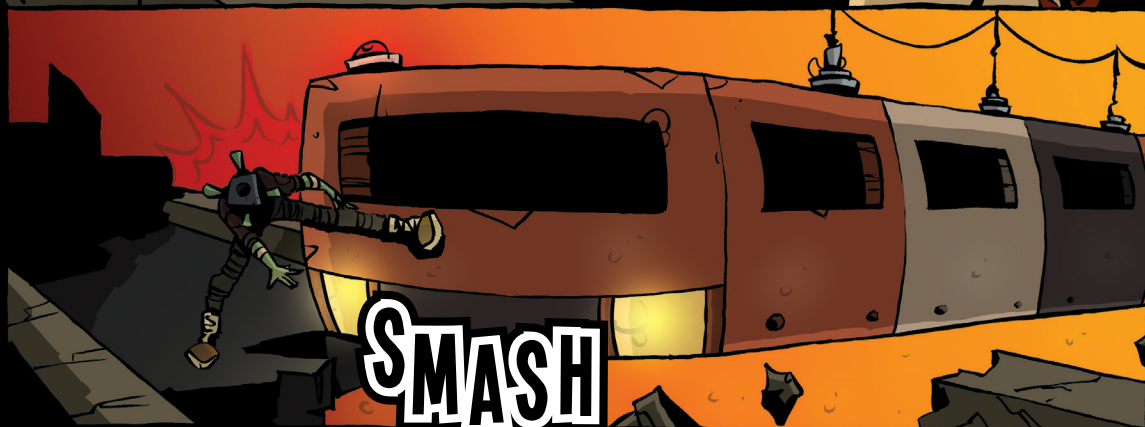


CRACK

CRACK

CRACK









GOODNIGHT!



VRRRRRRRR





TO BE CONTINUED...

# Tatbi No Hama

Concept Book 1  
*Imagining a World*







## Our Story

After working together as web developers for three years, James and Brandon discovered their similar love for story-telling. After formulating a friendship fueled on mate tea and video games they both set out to create a family friendly tale—Tabi No Hana. What started as a simple discussion during a long walk around the city morphed into a rough sketch of this time travel novel—their first story. Brandon said, “Write it and I’ll draw it” and James accepted that challenge. While James wrote, Brandon set off on a per-

sonal adventure, traveling around the world. Once Brandon returned home he had a comic book series waiting for him. Brandon quickly got to work drawing Tabi No Hana. The book was forged out of love for sci-fi, every detail being methodical. Tabi No Hana has become their passion project and could not have been possible without the support of their wives, Annie and Caitlin, as well as their friends and family. Every aspect of the book being created locally in Portland, Oregon, James and Brandon hope you love this story as much as they do.



# World Map

## Chindu

The district of utmost power, the finest residents live here. Only those born into wealth and royalty can live among the denizens of Chindu. Very few outsiders have lived within its walls, with the exception of the most talented military minds.

## Western Coast

The western coastal areas are considered extremely dangerous. Fierce beasts, corruption, and hidden regimes reside here. Survival is very difficult and living in this district is not for the feint of heart.

## Hiyokuna

At the very edge of modern civilization. The land is fertile and the people are prospering, but many of its citizens are in fear of what lies just beyond the trees—the western coast. The Numa family's home is in this district.







NA

CHINDI

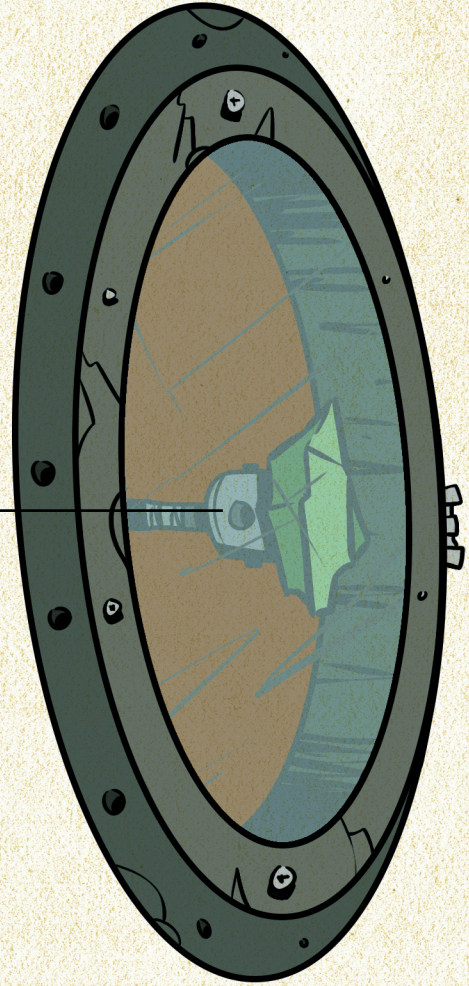


# Time Travel

A beautiful locket designed by Kaiashi Numa. Powered by the vibrations of a tota crystal, this device resonates at high frequencies at its heart. When combined with the beautiful keiri flower, the device can grant its possessor time travel. Etched on each locket is a symbol that represents its owner. Kaiashi created one locket for each family member, but it appears one is missing.

## Pressure Mechanics

Pressure is produced inside the locket from a small piston driven motor that is lined with a small amount of water and loba wax. Time travelling forward occurs when more gas pressure is added. The more energy and heat that is applied to the crystal, the higher the audible wavelength. This act determines how far in the future the possessor will go. In reverse, the same mechanics are applied.



---

The resignation of the crystal somehow interacts chemically with the keiri flower. Each time the beholder travels through time, the gears strangely move about in no certain order. If unchecked the bearer could be sent to any given timeframe.

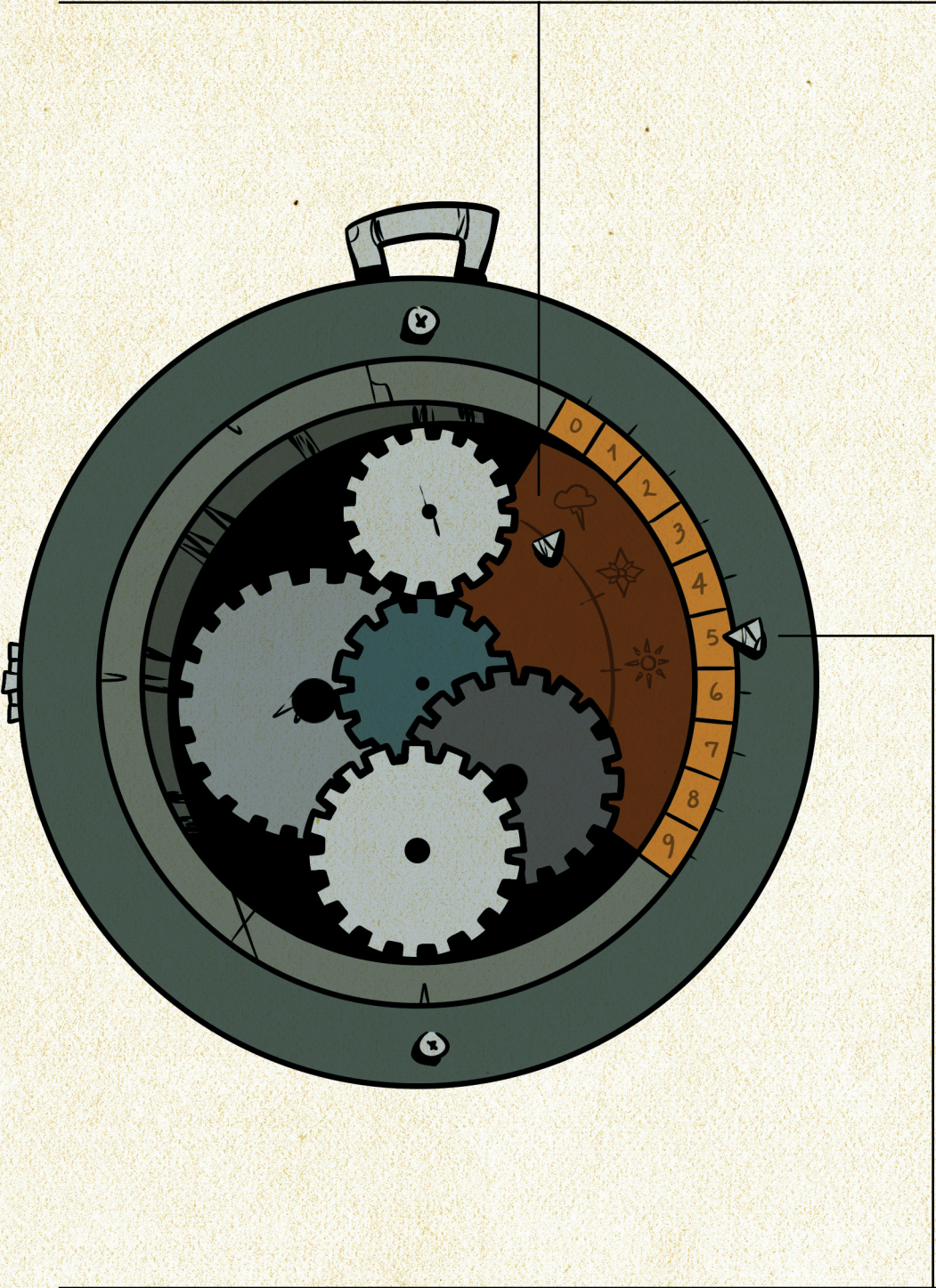


**The Three Seasons**

Time of the snake: stormy and cold.

Time of the boma: abundant and warm.

Time of the netsu: very humid and hot, but it's the birth of the kuyu seed.



The time traveling device is encased in a small metal locket with a small chain. When open, the locket has two turnable gears in a linear fashion. The first gear has a list of seasons, the second set of gears is lined with numbers ranging from zero to nine with a minus and plus symbol. On the inside of each locket resides a picture of the Numa family as remembrance to Kaiashi's great discovery.



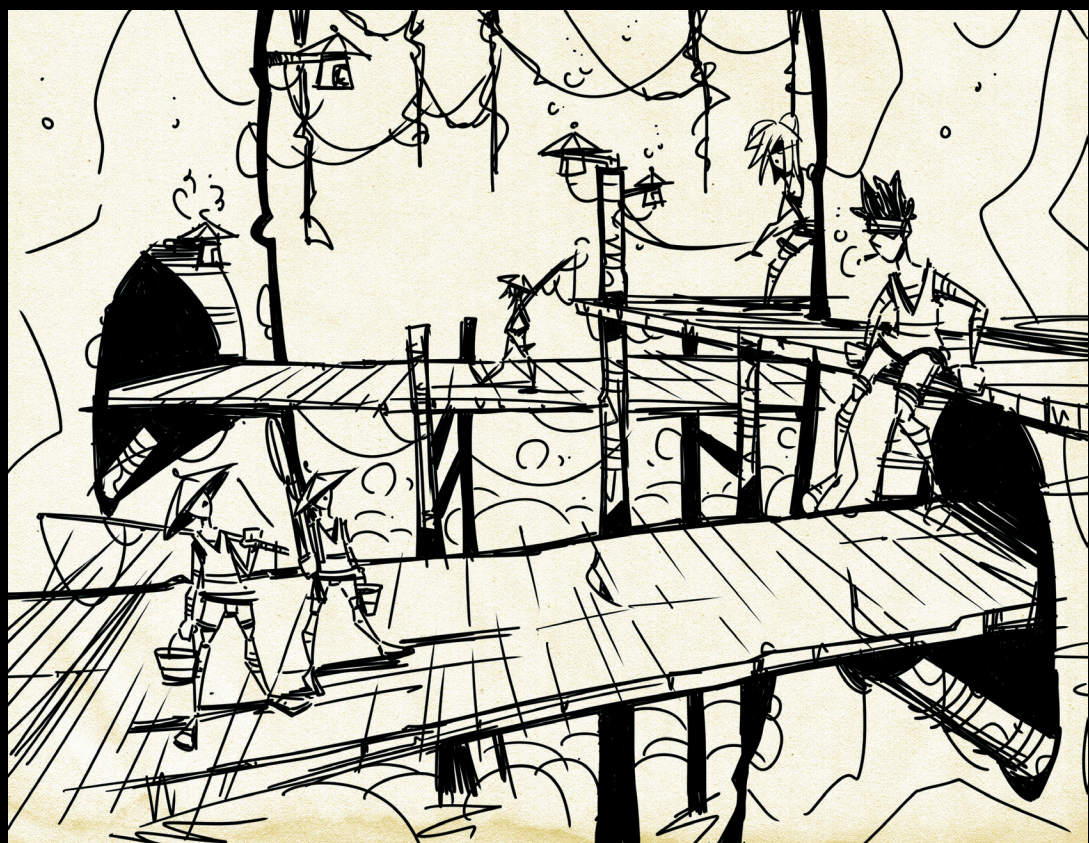
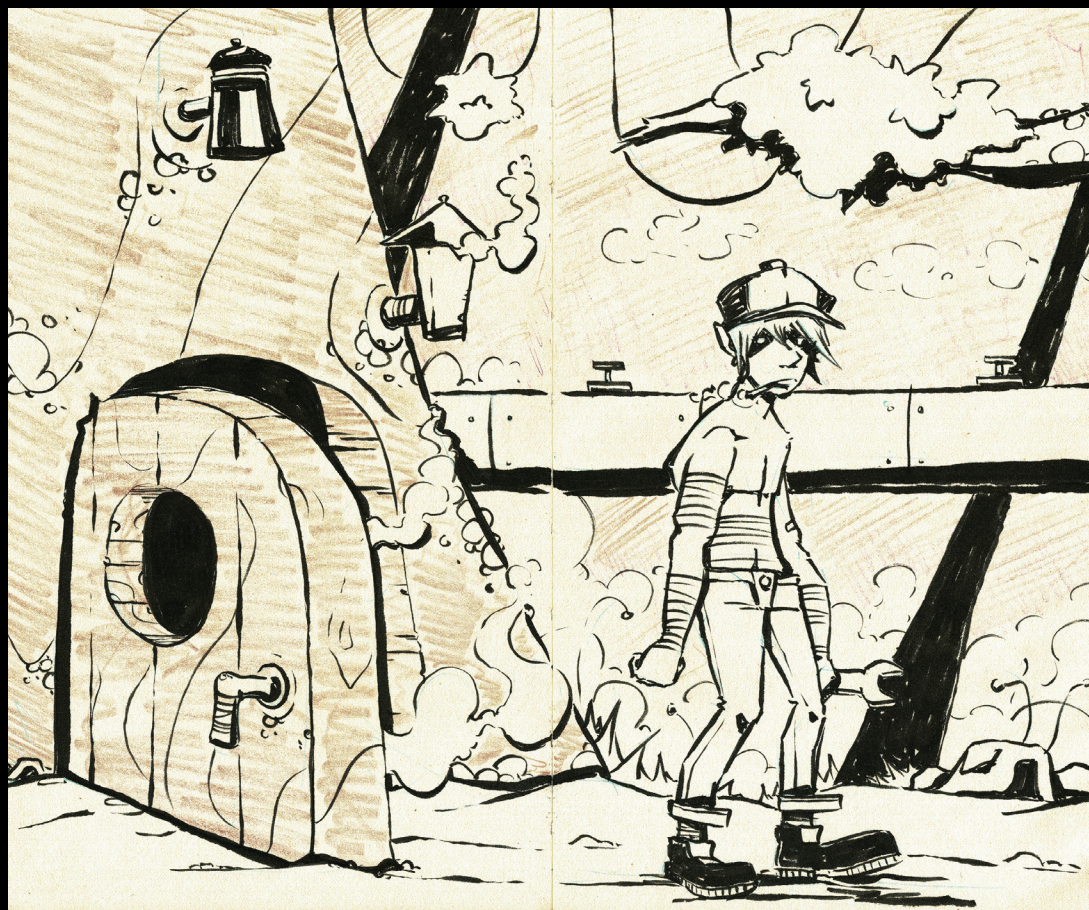
# The Steam Process

In the core of the kuyu tree is a sap-like substance named kuyu resin, a waxy thick liquid that takes up a very small portion of the tree. A large pipe with three chambers extrudes from the tree and into a large pump that sits above still water. The outer, larger chamber is the main part of the pipe that circulates water to the tree and back down to the pump. The inner portion of the pipe contains a thin hollow rod that runs directly to the center of the kuyu tree. loba oil—

an oil left from a decaying plant, and bonyu residue—a crystal like substance scraped from the bonyu leaf, are mixed together and poured into the center chamber where it makes contact with the kuyu resin. The moment kuyu resin meets with loba oil, extremely high temperatures form naturally. This process produces heat and steam that rotates an internal turbine inside the chamber. This process provides warmth and comfort for thousands of citizens.







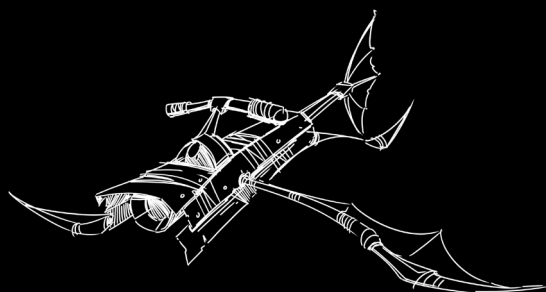




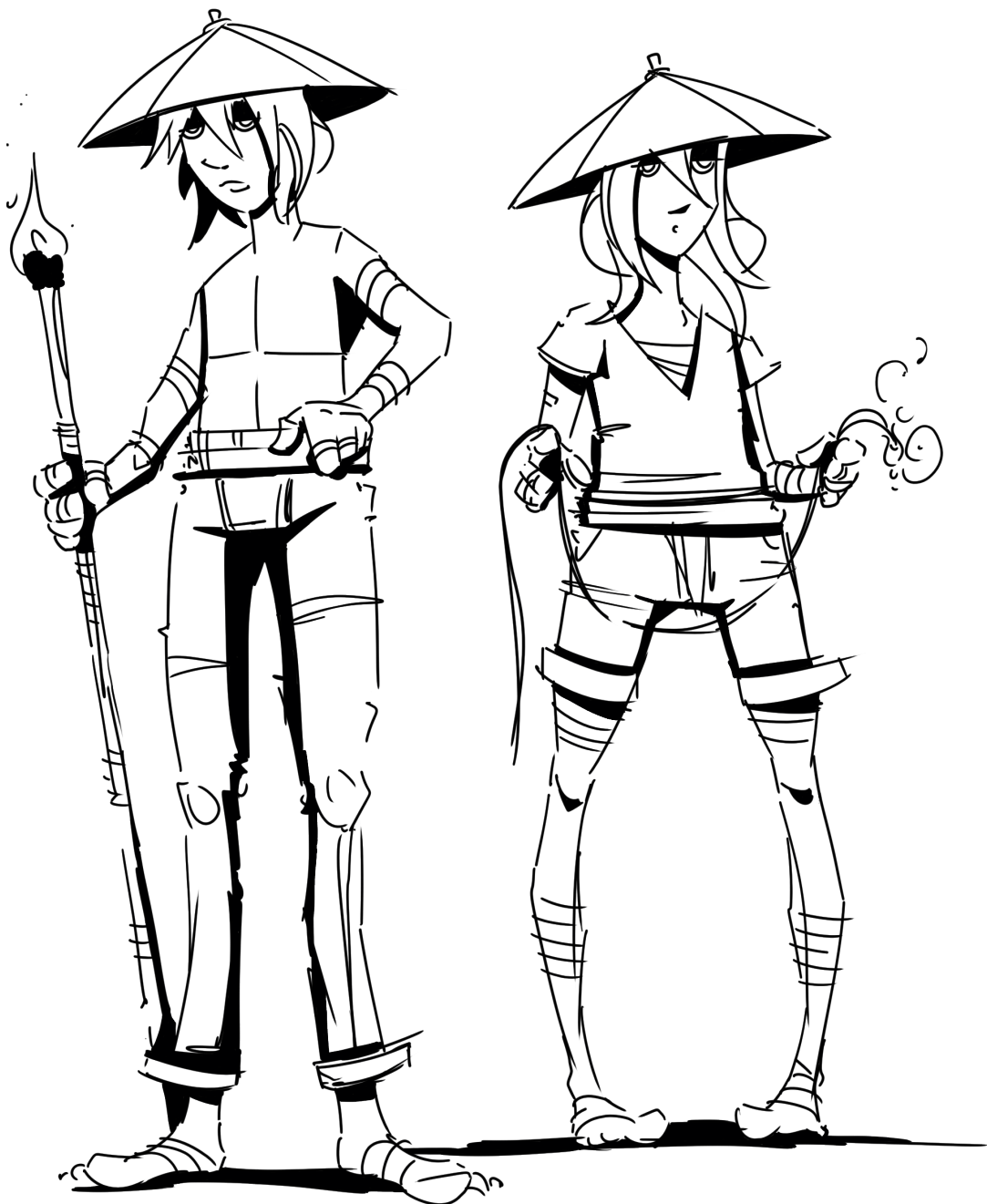
## The Semde

Raised in the deepest hills of the Yushiri Forest by the monks of Yaren, the brave men and women of the Semde are brought up from children to be the protectors of light. Their one and only job—to navigate the raised roads of the land and water and keep them well lit. The Semde are an elite group of martial artists swearing to a life of peace and protection. Their job is considered one of the most dangerous in existence. Dangerous creatures roam these lands and the

Semde's techniques for protecting themselves and the people are sacred and praised. Only honored individuals are welcomed to the hills of Yushiri and even fewer have survived the trek to their sacred lands.







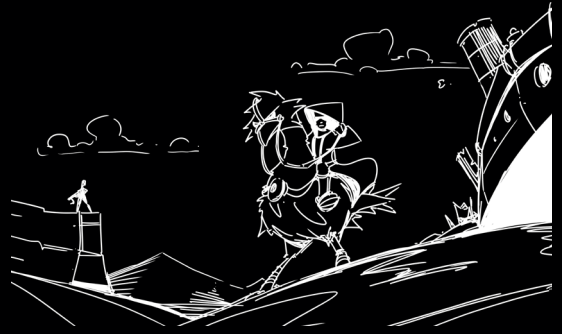
A vast network of wooden and metal roads were laid across the lands to supply local towns with supplies. Covered by trees these paths grow dark quickly. The monks volunteered to protect all who traverse these roads. Armed with a rope, stick, and wick, the Semde walk with a flame that burns for hours.



## The Oodan

Though not strong in number, the Oodan tribes are outcasted peoples living at the wild edges of the western coast, an area that is not under Chindu rule. The Oodan tribes are known for raiding towns, wreaking havoc, and stealing goods from travelling merchants. The Oodan are considered unorganized pirates amongst the major populous, but some agree they may be working for a higher order. Land controlled by the Oodan resides just beyond the Hiyokuna district, travelers are

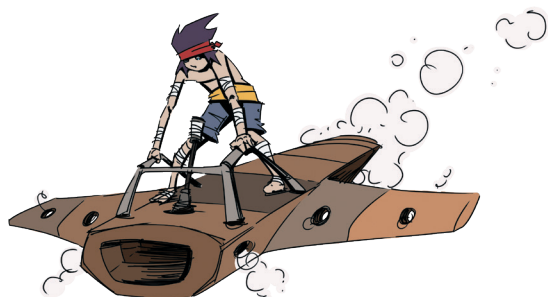
told to avoid the area at all costs. Oodan are experts at utilizing naturally occurring poisons for their weapons and often sneak up on their prey to avoid initial conflict.





## Olrarn

A strong and confident warrior, Olrarn fears nothing. She possesses a heart of gold and has an air that commands respect from all creatures. Raised in the Chindu district, she longed for what was beyond the walls and ran away to seek her own truth.



## Olma

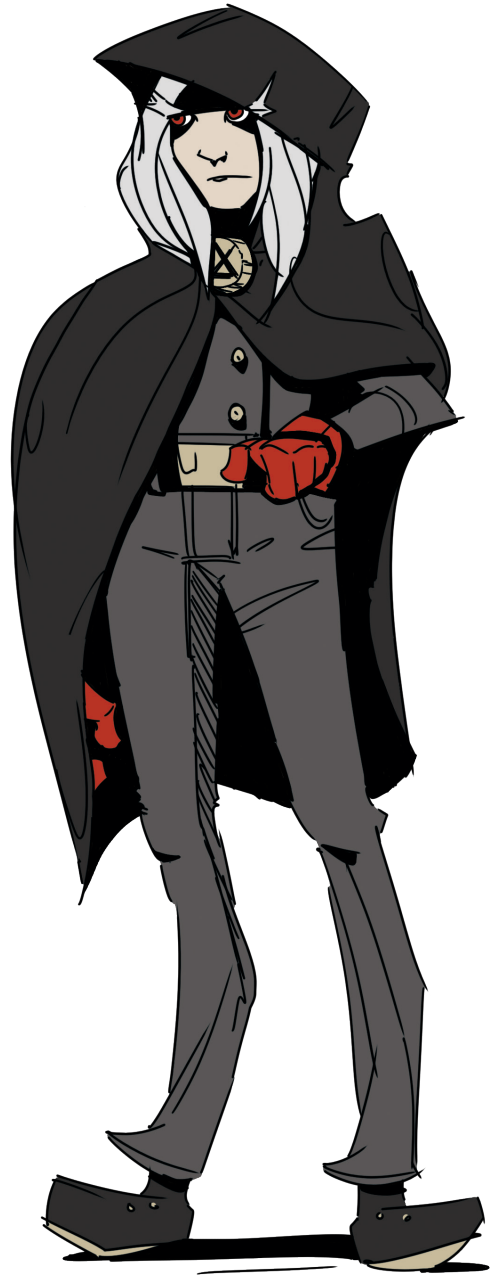
Kind and fragile, she was once revered as a skilled medicine woman. Olma fled the government factions to help citizens in need, but some believe she's working for a dark faction.





# Sooma

A very powerful individual, Sooma is the leader of the dark circle. Known at a young age as Shraya Sooma, he was a very well read and bright individual. Unfortunately, Sooma lost his mother and father to disease at a very young age. Surrounded by nine siblings, Sooma was forced to work for a distant uncle in the Hiyokuna housing district. Sooma soon grew bitter and refused to be bound by the shackles of family who had enslaved him for years. Sooma has a dark and powerful aura, many are in fear of his ability to predict the future.



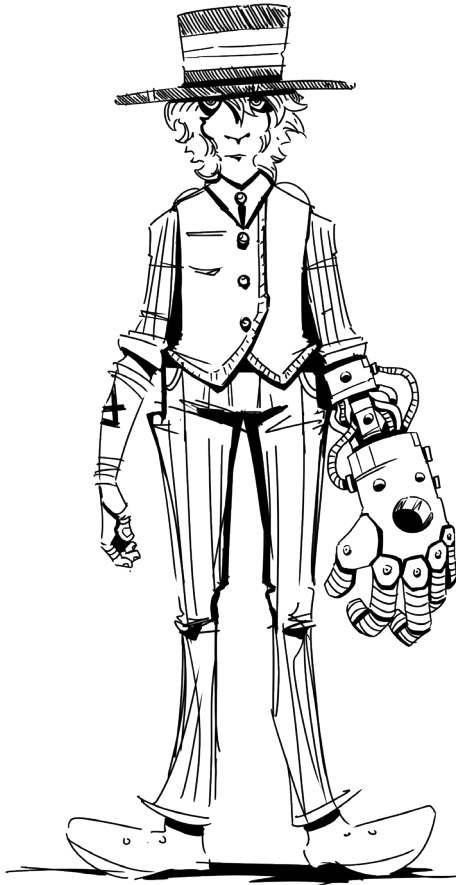
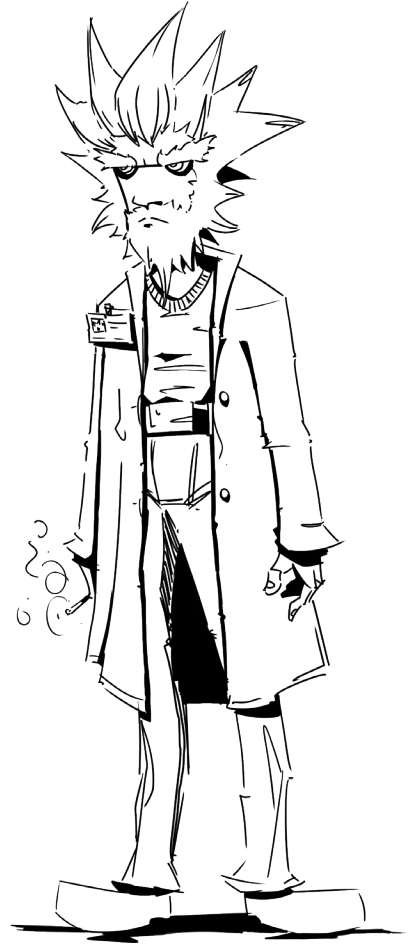
## The Dark Circle

Members of The Dark Circle are known by bearing a symbol—a triangle with a line through it. The faction is large and is primarily controlled by Sooma. Very little is known about the faction but one thing's certain; it's extremely powerful.

# Future Cast

## Dhruma Mayama

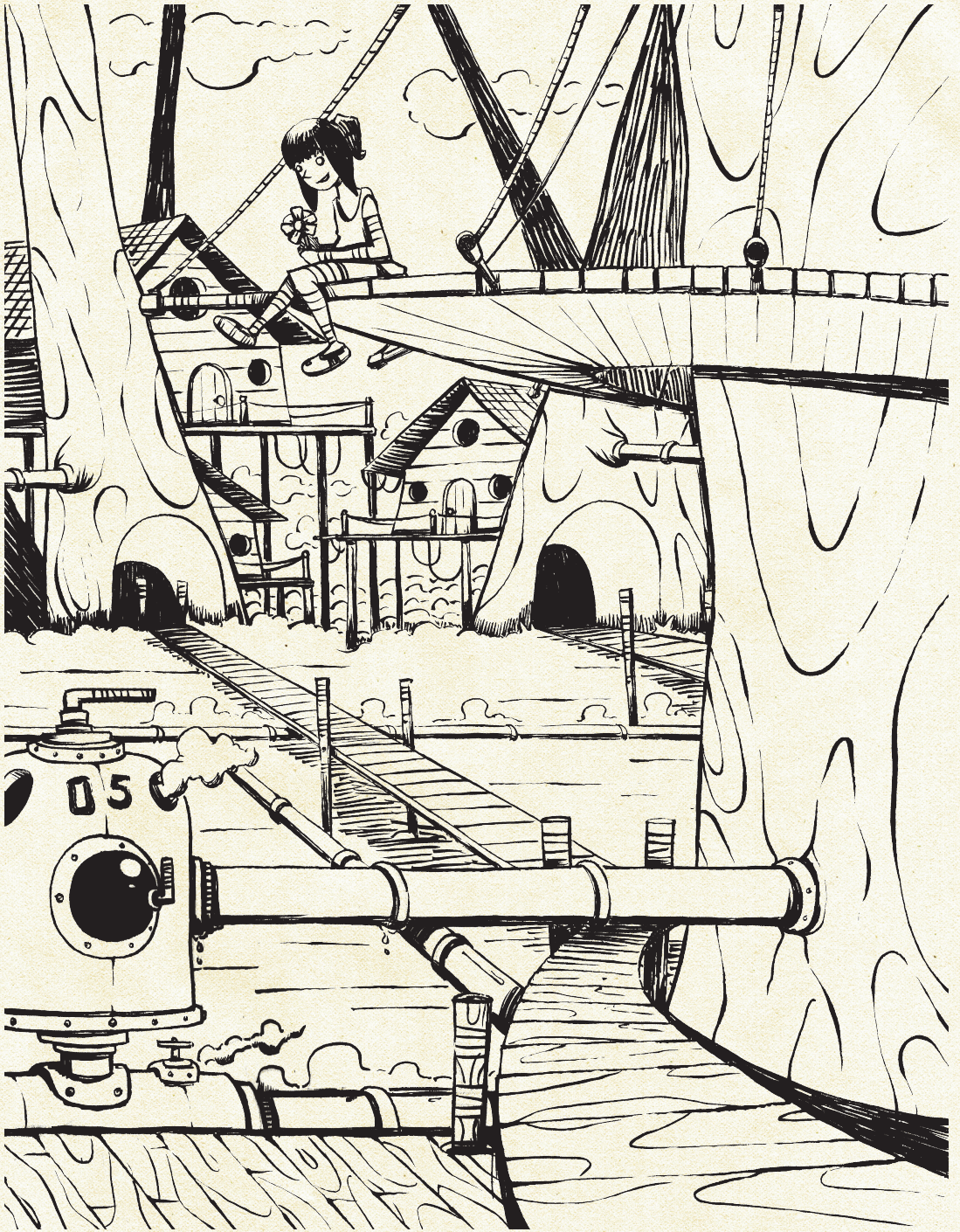
Known as the most brilliant medicine man in the lands, Dhruma is most widely known for his life-changing medicine. Grumpy, opinionated and often stubborn, Dhruma has gone on to discover life-saving cures, lethal poisons, and advanced weaponry. After his recent disappearance many conspiracy theories have evolved regarding his involvement with The Dark Circle.



## Gochen

Sooma's right hand man, Gochen is often referred to as the Governor. Strong willed, patient, and extremely nimble, Gochen is part human and part biotic. Trained from an early age to do Sooma's bidding, he has only one task in mind: defend Sooma with his life. Often doing Sooma's bidding, Gochen appears to have the ability to be in many places at once. Citizens question the wide range of mysterious powers he possesses.





Brandon's first artistic rendition of *Tabi No Hana*. The drawing was created to inspire James to write the novel in its entirety during Brandon's travels. The image depicts Utsu as a young girl sitting on a ledge holding the very rare keiri flower.

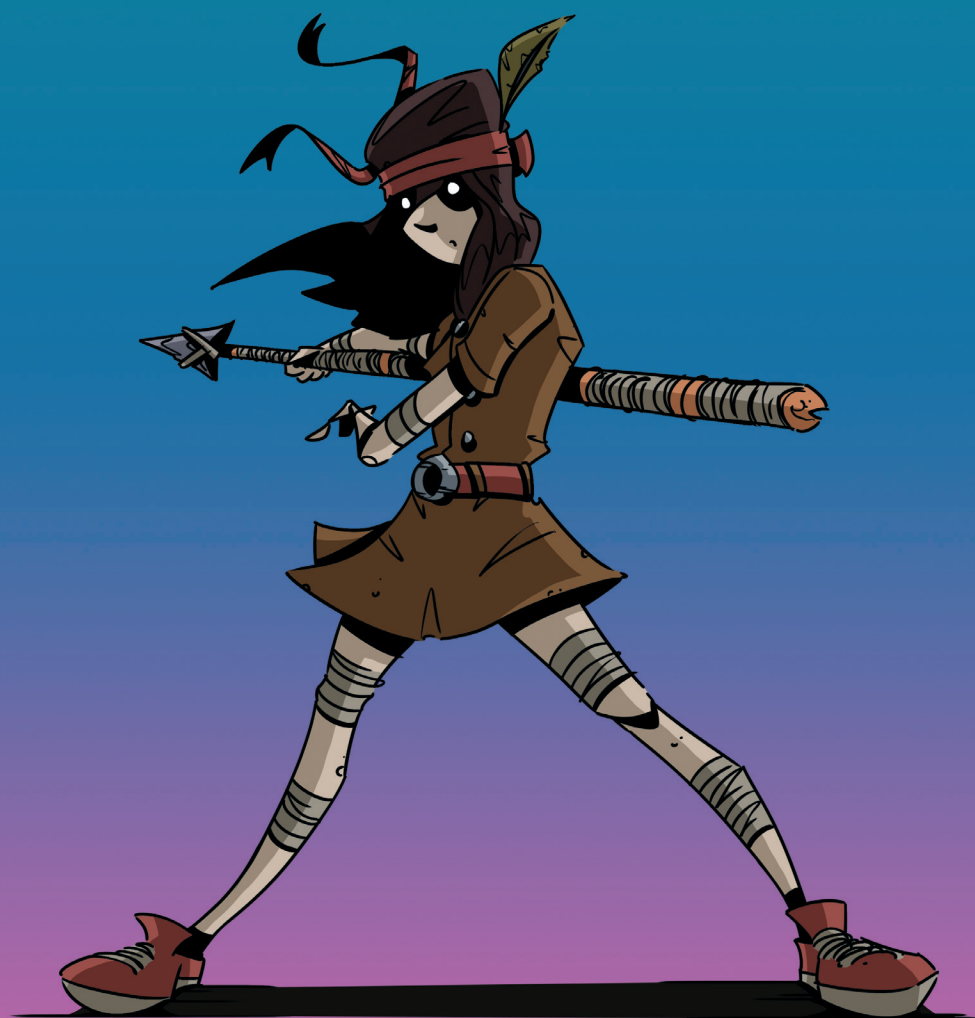
Fin.



# Tabi No Hana

The Story Continues!

Visit [tabinohana.com](http://tabinohana.com) and learn how you can keep reading.





Deep in the swamps, during an early age of steam, Kaiashi Numa lives with his family in Hiyokuna Shitchi. Running from his past, he has put his entire family in danger with his genius invention: a time traveling pendant.

# Tati No Hama

Smith / Kitajchuk

\$20.00  
ISBN 978-1-7320955-1-9  
52000

9 781732 095519